

# Distinguished Experts for A/E Consultancy

Profile 2023

Architecture & Engineering Experts Since 1990

Master Planning  
Infrastructure  
Architecture  
Interior Design  
Structural  
Electromechanical  
Infrastructure  
Landscape  
Construction Supervision  
Project Management



شركة الخبراء المميزين للاستشارات الهندسية

Distinguished Experts for A/E Consultancy Co.

Riyadh - Jeddah - Khobar - Abha



# TABLE OF CONTENTS



- Work Philosophy
- Scope of Services
- Branches
- Head of Divisions
- Collaborate Firms
- **DEC** Capability Statement

# About Us



Distinguished Experts for Architectural Engineering Consultancy Co. (DEC), a realm where creativity and precision meet to shape the future of the built environment. For over four decades, DEC has been a beacon of innovation and excellence in architectural engineering throughout Saudi Arabia and the Middle East.

DEC is a lead firm across KSA with 4 Branches founded on the fundamental principle that the greatest contribution of Consultancy, Architectural, & Engineering Services. Supervision and Project Management across KSA.

Our journey is one of relentless pursuit of excellence. Born from the idea that the fusion of diverse talents can spark unparalleled creativity, DEC is a melting pot of visionary architects, brilliant engineers, astute urban planners, and inspired interior designers. Together, we form a symphony of expertise, each note contributing to masterpieces that transcend mere construction.

At DEC, we do more than design buildings; we weave stories into the fabric of our cities. Every project is a narrative of sustainability, innovation, and elegance, meticulously crafted from concept to completion. We see possibilities where others see challenges, transforming abstract ideas into tangible marvels that stand as testaments to our commitment to quality and ingenuity.

What truly sets DEC apart is our ethos of continuous innovation. Our design-build philosophy ensures seamless execution, marrying the creative vision with impeccable craftsmanship. We delve deep into the essence of each project, bringing a fresh perspective that challenges conventions and sets new benchmarks in architectural excellence. Embark on this journey with DEC, where every project is an adventure into uncharted territories of design and engineering. Craving the future, one iconic landmark at a time.

D.E.C designs aim to create harmonious communities, fostering connections and enhancing the quality of life for all. We are driven by a culture of social responsibility, striving to deliver equitable, healthy, and resilient spaces that inspire and uplift.

## Our Mission

At Distinguished Experts for Architectural Engineering Consultancy Co. (DEC), our mission is to transform visionary ideas into extraordinary realities. We believe that every project is a unique tapestry, woven with the distinct values and aspirations of our clients and the communities they serve. Our approach is centered on people, driven by collaboration, and fueled by innovation.

We begin with a deep commitment to understanding your vision. Through a structured and interactive process, we listen intently, ensuring that your priorities guide every step of our journey together. Our team of dedicated professionals, spanning architects, engineers, urban planners, and designers, brings a wealth of expertise and creativity to the table, developing bespoke solutions that cater to your complex needs.

DEC thrives on the principle that great design emerges from the confluence of diverse perspectives and cutting-edge ideas. We challenge conventions and push boundaries to deliver designs that are not only functional and sustainable but also inspiring and transformative. Each project, whether a new construction, renovation, or planning, reflects our commitment to excellence and our passion for creating spaces that resonate deeply with their users.

Our work is a testament to the power of partnership. We believe that the client's style is our style, and through a collaborative process, we transform your vision into a built reality that exceeds expectations. From the grandest structures to the most intricate details, we ensure that our solutions are tailored to reflect the unique essence of each project.

## Our Vision



At Distinguished Experts for Architectural Engineering Consultancy Co. (DEC), we envision a world where architecture is a catalyst for positive change, shaping environments that enrich lives and inspire communities. Our commitment is to harness the transformative power of design to create spaces that are not only functional and beautiful but also meaningful and enduring.

We aspire to ignite culture and spark inspiration through our work, transforming ordinary spaces into extraordinary experiences. Our integrated design approach ensures that every element, from the grandest architectural gesture to the smallest detail, contributes to a harmonious and impactful whole.

At DEC, our vision extends beyond the physical realm. We are committed to fostering a culture of inclusivity, creativity, and collaboration, where diverse perspectives come together to shape groundbreaking solutions. We believe that by nurturing a dynamic and supportive environment, we can drive innovation and achieve excellence in everything we do.

# SERVICES



At Distinguished Experts for Architectural Engineering Co. (DEC), our journey of over four decades has transformed us from a visionary founder to a dynamic force of **300** professionals. Our strength lies in the diversity of our expertise, where each discipline enriches the other, creating a synergy that drives innovation and excellence in every project we undertake. Our multidisciplinary approach blends the talents of architects, urbanists, landscape designers, structural engineers, and more, forming a collective creative genius that pushes the boundaries of what is possible. By pooling our skills and perspectives, we can address the complexities of modern design and construction with holistic, human-centered solutions.

## ■ MASTER PLANNING

At D.E.C, master planning blends natural and built environments harmoniously, creating sustainable, vibrant communities that transcend time. We collaborate closely with clients to address project impact and purpose, prioritizing resilient urban design and long-term vision amidst climate change and urbanization, ensuring holistic success.

## ■ STRUCTURE

D.E.C excels in crafting bespoke construction projects of unparalleled safety and beauty. Our engineers collaborate closely with architects and landscape designers to innovate structural solutions that harmonize with real-world demands. We strive for resilience and aesthetic brilliance, pushing boundaries to ensure each creation is both inspiring and enduring.

## ■ ARCHITECTURE

At D.E.C, architecture is the harmonious fusion of visionary design and practical functionality, crafting spaces that are socially, economically, and environmentally ideal. From dynamic public spaces to serene residences, our creations balance creativity with realism, enhancing the human experience and seamlessly integrating into everyday life.

## ■ ELECTROMECHANICAL

Our electromechanical services orchestrate flawless building operations, optimizing efficiency, sustainability, and user well-being. We pioneer advanced electrical and mechanical systems, seamlessly blending technology with practicality. With a commitment to sustainability and innovation, we set benchmarks in performance and environmental stewardship, ensuring excellence in every solution we deliver.

## ■ LANDSCAPE DESIGN

D.E.C Landscape bridges urban and natural realms, fostering connections between people and nature amidst growing urbanization. We design inclusive public spaces that boost biodiversity and offer nature-driven solutions for tomorrow's needs. Our vision promotes social cohesion, technological innovation, and ecological stewardship, cultivating sustainable, smarter cities that ensure safety and well-being for everyone.

## ■ INFRASTRUCTURE

D.E.C crafts infrastructure that enriches modern living, tackling urban complexities with innovative solutions for transportation, utilities, and public spaces. We design robust, sustainable systems that address current needs and anticipate future demands. By integrating advanced technologies and sustainable practices, our projects enhance community well-being and functionality.



# SERVICES



## ■ CONSTRUCTION SUPERVISION

Effective construction supervision ensures that projects are completed on time, within budget, and to the highest quality standards. Our experienced supervisors oversee every aspect of the construction process, from groundbreaking to final inspection, ensuring adherence to design specifications and regulatory requirements. We manage resources, timelines, and budgets with precision, ensuring successful project delivery and client satisfaction.

## ■ GRAPHICS (CGI'S)

D.E.C's Visualization and Film group produces stunning architectural visualizations, animations, motion graphics, and films. These visual tools are used at various stages of a project, from concept and construction to marketing and final presentations. Our CGI services provide a clear and compelling representation of projects before they are built, aiding communication, marketing, and decision-making.

## ■ LAND SURVEYING

Accurate land surveying is crucial for the success of any project. Our team utilizes the latest technology to provide precise measurements and mapping, ensuring a solid foundation for planning and construction. We deliver detailed and reliable data that supports informed decision-making throughout the project lifecycle, ensuring that every project starts on the right foot.

## ■ PROJECT MANAGEMENT

Our project management services ensure seamless execution from start to finish, meticulously managing resources, timelines, and budgets. Leveraging BIM technology and adhering to ISO standards, we guarantee efficient, transparent, and high-quality processes. With proactive problem-solving and a commitment to excellence, we consistently deliver projects on time, within budget, and beyond expectations.

## ■ INTERIOR DESIGN

Our interior design services create spaces that lift spirits, excite users, and reinforce their mission. D.E.C. considers every space from the inside out and the outside in, prioritizing low-impact materials and healthy indoor air. Our designs influence mood and behavior, reflecting thoughtful consideration for function and aesthetics. Our expert teams work together to ensure a harmonious blend of function and creativity, designing healthy buildings for healthy people.



## RIYADH HEADQUARTER

Olaya Street- Shaddad Ibn Aous, Taya Center, 2nd Floor, Office 7-

Al Olaya Dist., Riyadh, KSA.

Mob: ++966536625257

Email: [dec@decgrp.net-business@decgrp.net](mailto:dec@decgrp.net-business@decgrp.net)

P.O. Box 11543 Riyadh

[https://maps.app.goo.gl/rxKcq4H8XZTkx8cW7?g\\_st=iw](https://maps.app.goo.gl/rxKcq4H8XZTkx8cW7?g_st=iw)

## JEDDAH BRANCH

KSA –Jeddah, Al-RewaisDist, SAMSUNG Office Building 4th Floor  
office 402

<https://goo.gl/maps/2wTUQYQEUFo4Yc757>

## Abha BRANCH

Abha Hub, Al Gameaa St,Guraiger, Abha 62529, Saudi Arabia

Phone : + 966544206004

<https://maps.app.goo.gl/nWnD4ttV5RunbkDy5>

## Egypt Branch

6<sup>Th</sup> Of October-36 Abduhalim Mahmoud St, 1st Floor. Al  
Motamaiz District

## Lebanon Branch

Beirut (Interior Design and Decoration)



# DEC's PARTNERS



## International Companies

Callison RTKL-UK Ltd.



Wimberly Allison Tong & Goo



HDP Consulting Ltd



DLR Consulting inc



Officially Arup Group Limited



WS Consulting & Construction-inc



RMJM Consulting Ltd



## Regional Companies

RMC Consultants



HRTi's Project Management Office



KAF consultancy ltd



## Sister Companies

TIBA Engineering Office



MED consultancy



Trust company



DEC open to collaborate with any international engineering firms



# DEC's Clients



# DEC's Classification Certificate



2/1



## شهادة

### تصنيف مقدمي خدمات المدن

تمنح وزارة الشؤون البلدية والقروية والإسكان شهادة تصنيف بالدرجة

للمنشأة الخبراء المميزين للاستشارات الهندسية



رقم السجل التجاري / الترخيص	تاريخ إصدار سجل التجاري / الترخيص	اسم مالك المنشأة	نوع المنشأة	جنسية المنشأة	رأس المال	بيانات المنشأة
5110000435	17/01/2014	فهد جميل محمد علي قطان	ذات مسؤولية محدودة مهنية	سعودي	25000.0	
رقم الشهادة	تاريخ الإصدار	حجم المنشأة	درجة التقييم الاتمالي	درجة التقييم الفني		بيانات شهادة التصنيف
2023010006	22/10/2023	صغيرة	A-	84.95		
القناع	الأنشطة					أنشطة شهادة التصنيف
المكاتب الهندسية	الاستشارات الهندسية للطرق والصور والانعق، الاستشارات الهندسية للسكك الحديدية، الاستشارات الهندسية للموانئ البحرية وإنشاءات النقل البحري، الاستشارات الهندسية للمياه والصرف الصحي، أنشطة الاستشارات البحرية، أنشطة الاستشارات الجيولوجية، إدارة المشاريع الإنشائية، أنشطة الاستشارات الهندسية والمعمارية					

رئيس الوزارة المهندس مصطفى العبد

د. فيصل بن حسين المنقر

- يسري مفعول هذه الشهادة حتى تاريخ 22/10/2024

- تصدر هذه الشهادة إلكترونياً وعلى الجهات المالكة للمشاريع التحقق من الشهادة المقدمة من خلال موقع الوزارة



# DEC's ISO Certificates





## Certificate of Registration

**DISTINGUISHED EXPERTS FOR AE CONSULTANCY**

KSA – JEDDAH – AL-REWAIS DIST, - SAMSUNG OFFICE BUILDING – 4TH FLOOR – OFFICE 402

has been assessed and Certified by Otabu Global Services Pvt. Ltd.  
as meeting the requirements of:

### ISO 9001:2015

### Quality Management System

For the following scope of activities:

- MASTER PLANNING URBAN & RURAL DEVELOPMENT
- ARCHITECTURE DESIGN
- STRUCTURE DESIGN
- ELECTROMECHANICAL DESIGN
- INFRASTRUCTURE DESIGN
- LANDSCAPE DESIGN
- INTERIOR DESIGN
- CONSTRUCTION SUPERVISION
- TECHNICAL SUPPORT FOR GOVT. ORGANIZATION
- TECHNICAL OFFICE SERVICES

Issue No :01  
Date of Certification: 07 February 2023  
1st Surveillance Due: 06 February 2024

Revision No ( ) : NA  
2nd Surveillance Due: 06 February 2025  
Certificate Expiry: 06 February 2026  
(subject to the company maintaining its system to the required standard)

**Certificate No:- 0207Q485323**  
To Verify this Certificate please visit at [www.otabuglobal.com](http://www.otabuglobal.com)






**Otabu Global Services Private Limited**  
Accredited by IAS (International Accreditation Service, Inc.)  
(3050 Saturn Street, Suite 100, Brea, California 92821 U.S.A.)  
Validity of this certificate is subject to annual surveillance audits done successfully  
The Certificate of Registration Remains The Property of Otabu Global Services Private Limited and Shall be Returned Immediately Upon Request.  
Email: [info@otabuglobal.com](mailto:info@otabuglobal.com) / Website: [www.otabuglobal.com](http://www.otabuglobal.com)



## Certificate of Registration

**DISTINGUISHED EXPERTS FOR AE CONSULTANCY**

KSA – JEDDAH – AL-REWAIS DIST, - SAMSUNG OFFICE BUILDING – 4TH FLOOR – OFFICE 402

has been assessed and Certified by Otabu Global Services Pvt. Ltd.  
as meeting the requirements of:

### ISO 14001:2015

### Environmental Management System

For the following scope of activities:

- MASTER PLANNING URBAN & RURAL DEVELOPMENT
- ARCHITECTURE DESIGN
- STRUCTURE DESIGN
- ELECTROMECHANICAL DESIGN
- INFRASTRUCTURE DESIGN
- LANDSCAPE DESIGN
- INTERIOR DESIGN
- CONSTRUCTION SUPERVISION
- TECHNICAL SUPPORT FOR GOVT. ORGANIZATION
- TECHNICAL OFFICE SERVICES

Issue No :01  
Date of Certification: 07 February 2023  
1st Surveillance Due: 06 February 2024

Revision No ( ) : NA  
2nd Surveillance Due: 06 February 2025  
Certificate Expiry: 06 February 2026  
(subject to the company maintaining its system to the required standard)

**Certificate No:- 0207E485423**  
To Verify this Certificate please visit at [www.otabuglobal.com](http://www.otabuglobal.com)






**Otabu Global Services Private Limited**  
Accredited by IAS (International Accreditation Service, Inc.)  
(3050 Saturn Street, Suite 100, Brea, California 92821 U.S.A.)  
Validity of this certificate is subject to annual surveillance audits done successfully  
The Certificate of Registration Remains The Property of Otabu Global Services Private Limited and Shall be Returned Immediately Upon Request.  
Email: [info@otabuglobal.com](mailto:info@otabuglobal.com) / Website: [www.otabuglobal.com](http://www.otabuglobal.com)



## Certificate of Registration

**DISTINGUISHED EXPERTS FOR AE CONSULTANCY**

KSA – JEDDAH – AL-REWAIS DIST, - SAMSUNG OFFICE BUILDING – 4TH FLOOR – OFFICE 402

has been assessed and Certified by Otabu Global Services Pvt. Ltd.  
as meeting the requirements of:

### ISO 45001:2018

### Occupational Health & Safety Management System

For the following scope of activities:

- MASTER PLANNING URBAN & RURAL DEVELOPMENT
- ARCHITECTURE DESIGN
- STRUCTURE DESIGN
- ELECTROMECHANICAL DESIGN
- INFRASTRUCTURE DESIGN
- LANDSCAPE DESIGN
- INTERIOR DESIGN
- CONSTRUCTION SUPERVISION
- TECHNICAL SUPPORT FOR GOVT. ORGANIZATION
- TECHNICAL OFFICE SERVICES

Issue No :01  
Date of Certification: 07 February 2023  
1st Surveillance Due: 06 February 2024

Revision No ( ) : NA  
2nd Surveillance Due: 06 February 2025  
Certificate Expiry: 06 February 2026  
(subject to the company maintaining its system to the required standard)

**Certificate No:- 0207O485523**  
To Verify this Certificate please visit at [www.otabuglobal.com](http://www.otabuglobal.com)






**Otabu Global Services Private Limited**  
Accredited by IAS (International Accreditation Service, Inc.)  
(3050 Saturn Street, Suite 100, Brea, California 92821 U.S.A.)  
Validity of this certificate is subject to annual surveillance audits done successfully  
The Certificate of Registration Remains The Property of Otabu Global Services Private Limited and Shall be Returned Immediately Upon Request.  
Email: [info@otabuglobal.com](mailto:info@otabuglobal.com) / Website: [www.otabuglobal.com](http://www.otabuglobal.com)



# Awarded Projects

As a result of the pursuit of excellence, and thrive to deliver only the finest to clients, DEC projects have been recognized by the top trackers, magazines, and events.

DEC recognizes a collective of future-forward thinkers and designers who are driven to face the critical challenges of our time. We are dedicated to improving people's lives, and serving our clients, Together, we cultivate a culture of design excellence at the confluence of art and science, blending the power of creative expression with a clear sense of purpose.

### ■ Al Nakheel Project



### ■ The Point- Abha



- The Point has already received a number of prestigious accolades winning :
- The Point Abha wins gold in the Evolving Innovation & Aspiration category from [@ICSC](#) at the 2023 Global Design & Development Awards.
- Arabian Property Awards,
- The Saudi Commercial Interior Design Awards (CID Awards)
- Global RLI Awards, RLI Future Project.
- Interior Design of The Year: Concept category; "Best Future Concept" in the Commercial Interior Design Awards: Hilton The Point Residences and Canopy Hospitality category.

# URBAN PLANNING

# Al Nakheel Project







## ■ Al Nakheel Project

**The Project** is Located in Eastern Province, KSA  
Approx Area **4,696.000 Sq.m**

**Client** Rased Abd El Rahman Al Rashed

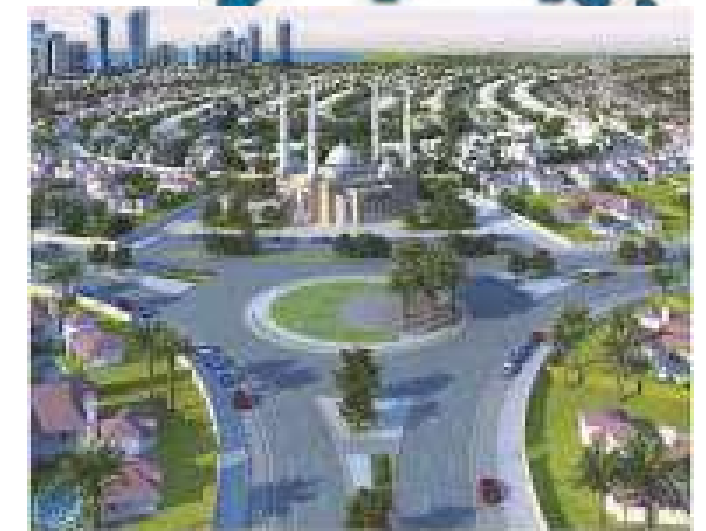
**Collaborates** with Argos Design

### Scope of Services

Arch and Engineering Design including Master Planning, Infrastructure, Architectural, Interior Design Landscape Design, Structural, Electrical, Mechanical, Life Safety, and Construction Supervision

### Amenities

Residential Buildings  
Multi Use Buildings  
Commercial Buildings



Al Nakheel Project



AI Nakheel Project





## Jazan Community

**The Project** is Located in King Abdullah Bin Abdel-Aziz Suburb, Jazan, Saudi Arabia on approx. land area of **1,500,000 sq. m**  
**Client** Public Pension Agency

**Collaborates** with Argos Design

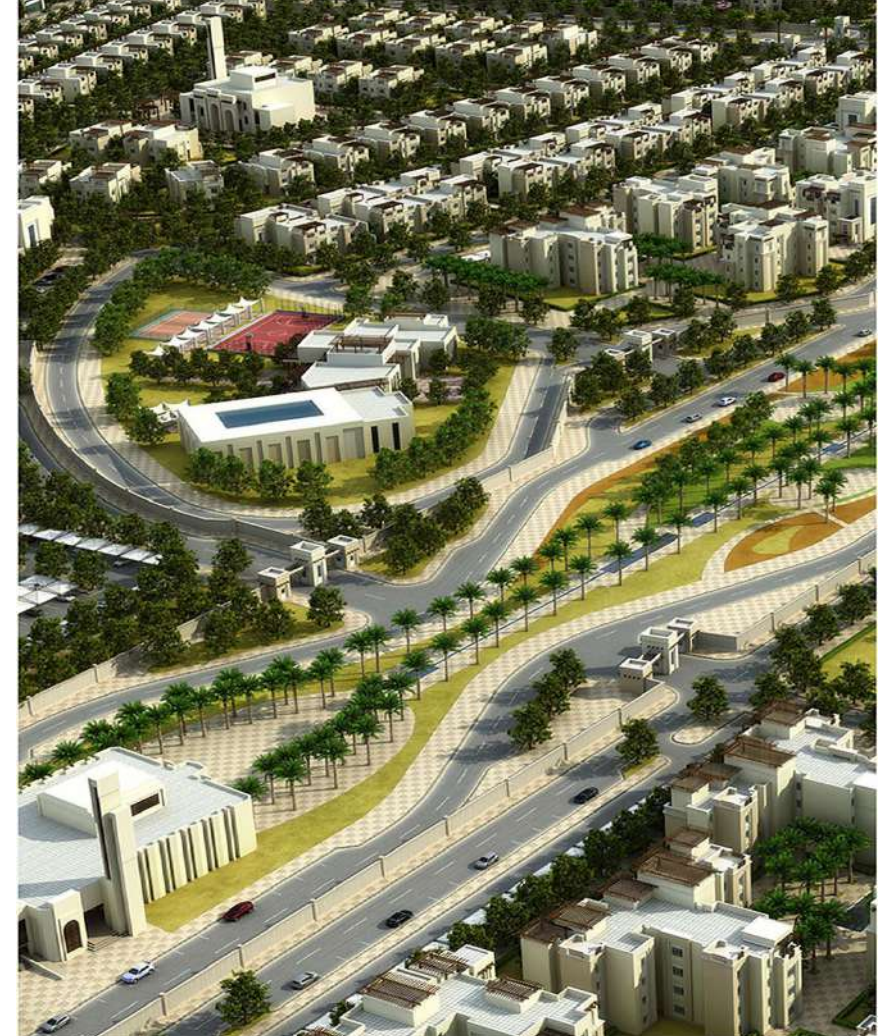
### Scope of Services

Arch and Engineering Design including Master Planning, Infrastructure, Architectural, Interior - Landscape Design, Structural, Electrical, Mechanical

### Amenities

1400 residential units  
1260 apartments  
140 townhouses & villas  
services  
British School  
community sports  
central garden water park  
shopping center plaza  
ceremony / event center

Jazan Community



Lacasa Residential Resort





## Lacasa Residential Resort

**The Project** is Located in is Located in Riyadh, KSA.

Approx Area **4,696.000 Sq.m**

**Client** Rased Abd El Rahman Al Rashed

**Collaborates** with Argos Design

### Scope of Services

Master Plan  
Architecture  
Construction supervision  
Engineering  
Evaluation studies

### Amenities

82 villas  
Administration building  
Central building  
Games building  
3 Media building  
wellness building  
Mosque

Lacasa Residential Resort





Lacasa Residential Resort



Private Compound



# Private Compound



## Private Compound Jeddah

**The Project** is Located in is Located in  
Jehhah, KSA.

Approx Area **67,302 Sq.m**

**Client** Rased Abd El Rahman Al Rashed  
**Collaborates** with Argos Design

### Scope of Services

Master planning  
Architectural design  
Initial landscape design  
Landscape design  
Engineering

### Amenities

Residential buildings Apartments  
Sports & Leisure Zone Club  
Health Club  
Commercial Zone Public Garden  
Main Gate



Ewan Plaza – Jeddah





## Ewan Plaza – Jeddah

Dahaban, North Jeddah

**The Project** is Located in is Located in Dahaban, North Jeddah, KSA.

Approx Area **126,000 Sq.m**

### Scope of Services

Master planning

Architectural design

Infrastructure Structure

Construction supervision

### Amenities

41 residential buildings

Sport Club & Health care Office

Park area

Lakes and Gardens

Offices & Parks



# Al Fareeda Compound Jeddah, KSA



## ■ Al Fareeda Compound

**The Project** is Located North of Jeddah, KSA  
at approx. the land area of **1,019,729 sq. m**

**Client** EMKAN Investment & Real Estate Development

### **Scope of Services**

Arch and Engineering Design including Master Planning, Infrastructure, Architectural, Interior Design Landscape Design, Structural, Electrical, Mechanical m Life Safety, and Construction Supervision

### **Amenities**

2088 villas  
Sports club Local mosque Services  
Schools  
Green promenade

Al Fareeda Compound Jeddah, KSA



Dammam Road Community





## ■ Dammam Road Community



The challenge was to build a world complex embracing the natural location to benefit the green open spaces through the main spine, Fresh air with children and family in mind.

Our Concept was to be built as a Residential compound, award-winning development. The Mixed-Use in preliminary residential Villas with the supporting International school, and new vision international school. The Master Plan was designed in a unique way to form the Main axis from the main road and a secondary axis from the secondary road to form a nice boulevard through the axis of the project to produce a nice image for the residents living in this compound and using different schemes for facades to produce variety for the villas and the buildings.



# Dammam Road Community



**The Project** is Located at King Dammam Riyadh Road, Riyadh, Saudi Arabia on approx. the land area of **3,500,000 sq. m**

**Client** Rased Abd El Rahman Al Rashed

**Collaborates** with Argos Design

### **Scope of Services**

Master Plan  
Architecture  
Construction supervision  
Engineering  
Evaluation studies

### **Amenities**

82 villas  
Administration building  
Central building  
Games building  
3 Media building  
wellness building  
Mosque

ALJ CITY – JEDDAH MIXED USE COMPLEX





## ALJ CITY – JEDDAH MIXED USE COMPLEX

**The Project** is Located in Jeddah Saudi Arabia on approx. the land area of **214,000 sq. meters with BAU area 90,000 sq. meters**

**Client** ABDULLATIF JAMIL CO

### Scope of Services

Arch and Engineering Design Review ( Full Disciplines) - AOR



MEGA REAL ESTATE DEVELOPMENT





## MEGA REAL ESTATE DEVELOPMENT, Riyadh

**The Project** is Located in Riyadh, KSA

approx. land area of **1,000,000 sq. meters**

**Client** His Highness Prince MISHAAL BIN ABDUL-AZIZ AL-SAOUD

### Scope of Services

Master planning Urban Design  
Architectural  
Electromechanical  
Infrastructure Structure,  
Evaluation & Tech. studies  
Construction Supervision

### Amenities

Residential villas compound  
Residential Buildings  
Recreational open spaces Golf courses  
Sports Club  
Zoo & Aqua Park  
Horseback riding Club  
Five-star Hotel  
Hospitals  
Spa & Health care Centers  
Mega Mall  
Office park  
Multi-purpose units  
Elementary schools Services

Blue city Alsawadi co. LLC Alsawadi, Oman





## Blue city

**The Project** is Located in Alsawadi, Oman, approx. land area of **168,000 sq. meters**

**Client** Alsawadi Investment & tourism co. LLC

### Scope of Services

Architectural design Engineering  
Evaluation Tech. studies

### Collaborate

International Firm CANNON  
DESIGN

### Amenities

Golf Community  
City beach resort hotel  
Suites & guest rooms  
Shopping mall







## ■ Sidi El Masri

**The Project** is Located in Tripoli, Libya approx. the land area of **822,000 sq. m**

### Scope of Services

Master planning  
Architectural design

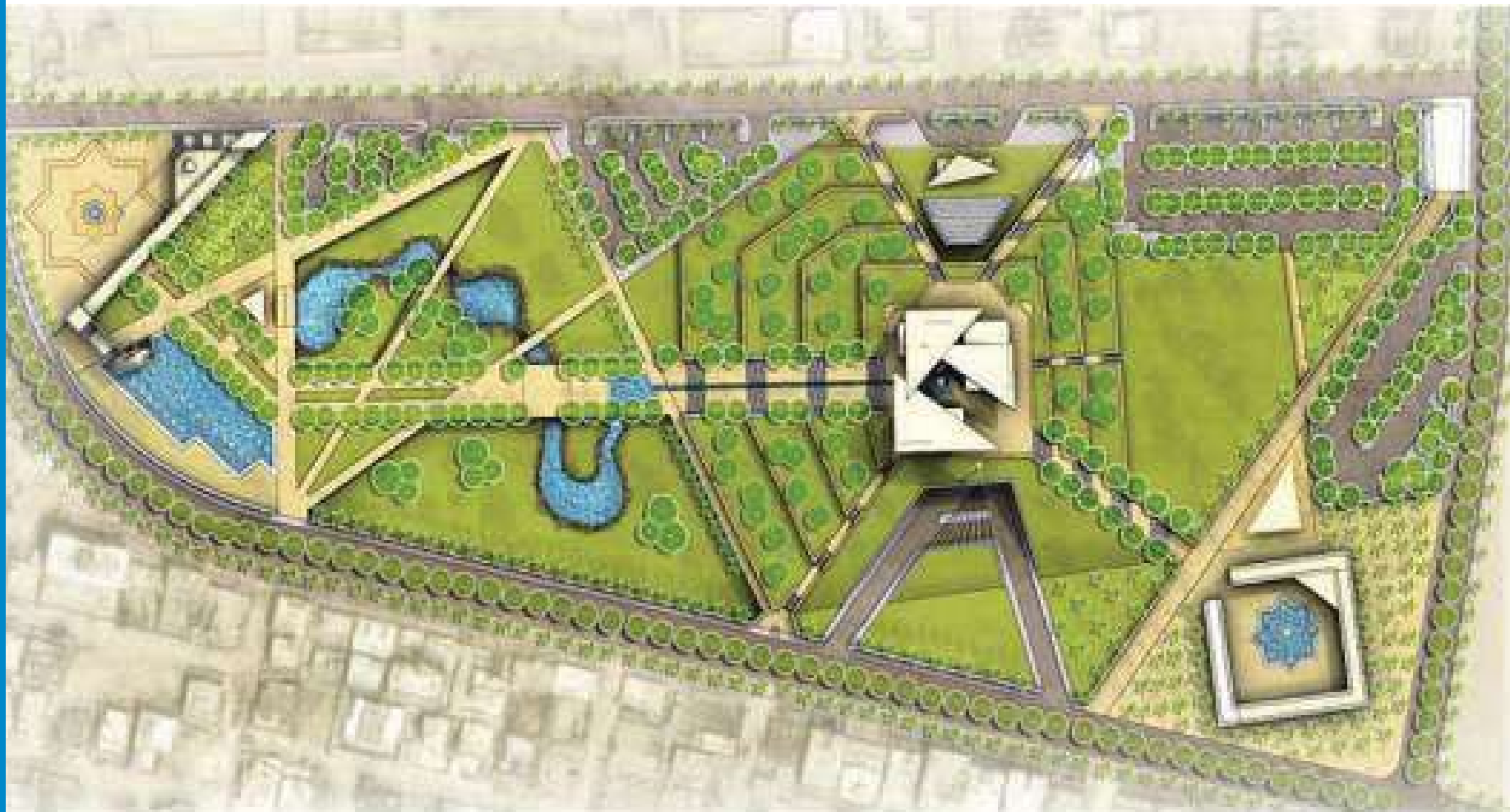
### Amenities

Recreation area  
Staff building  
Sport area  
Lake park  
Amphitheater Olive grove park  
Picnic Zone Parking



Sert Park - Libya





## ■ Sert Park

**The Project** is Located in Tripoli, Libya  
approx. the land area  
of **t 12,000 sq. m**

### Scope of Services

Master Planning  
Architectural design

### Amenities

Restaurant Civic space  
Cultural facility Children's Play  
Water feature Meadows Clubhouse  
Mosque



# MIXED-USE

MAYDAN BUSINESS PARK





## ■ Maydan Business Park

The unique master plan and the detailed design proposal show the uniqueness of creating a venue to attract top talent and become a popular entrepreneurial hub. A place that grows and evolves with the times, changing from day to night, from season to season.

The master plan was developed based on many factors such as the workplace environment, its adaptability, accessibility, and sustainability.

**The Project** is Located in Riyadh, KSA approx. the land area of **376,160 sq. m**

**Client** EMKAN Investment & Real Estate Development

**Collaborates** with RMJM Consulting Ltd

### Scope of Services

Arch and Engineering Design including Master Planning, Infrastructure, Architectural, Interior Design Landscape Design, Structural, Electrical, Mechanical - Life Safety, and Construction Supervision

MAYDAN BUSINESS PARK



MAYDAN BUSINESS PARK





The Point - Abha



## The Point

Abha, KSA



The Point in Abha, Saudi Arabia's Aseer region aims to provide a unique retail and hospitality destination.

The 75,564 sq m project vision is to create a cultural center with a unique set of courtyards, plazas, and terraces, connecting a year-round multi-use events space.

The site terrain and varying ground levels offer an opportunity to create a multi-level customer experience within its different components, the means for well-crafted contextual planning, and a massing approach that resonates well with Abha and its historical planning and building strategies.



The Point – Abha



The Project is Located in Abha, KSA. on approx. the land area of **75,564 sq. m**

Client RED SEA MALL

Scope of Services,

Arch and Engineering Design Review  
( Full Disciplines) - AOR



AL Othaim Circles – Al Khobar





## ■ Al Othaim Circles

**Th Project** is Located in Al Khobar, KSA  
approx. Plot A BAU Area **33.200 sqm**  
Plot B BAU Area **41.983 sqm**

**Client** Al Othaim investment Co.

**Collaborates** with ECG

### **Scope of Services**

Arch and Engineering  
Design Review  
( Full Disciplines) - AOR

# AL Othaim Circles – Al Khobar



## ■ Al Othaim Circles

**PLOT A** Total BAU area **33.200 sqm**

### Amenities

- Offices
- Retails
- Food & Beverage
- Cinema
- Entertainment Area
- Services
- Prayer Room
- Ablution
- Basement Parking -575





## Al Othaim Circles

**PLOT B** Total BAU area **41.983 sqm**

### Amenities

- Offices
- Terrace
- Food & Beverage
- Kindergarten
- Services
- Open Above Services
- Basement Parking -579



Commercial & Residential Building– Riyadh





## Commercial & Residential Building

**Th Project** is Located in Riyadh, KSA  
approx. Plot A BAU Area **5000 sqm**  
Plot B BAU Area **6800 sqm**

**Client** Kanoo Real State Co.

### Amenities

Retails  
Food & Beverage  
Prayer Room  
6 Villas

### Scope of Services

Arch and Engineering Design  
including  
Architectural,  
Interior Design  
Structural, Electrical, Mechanical  
, Life Safety,  
and Construction Supervision



ZAHRAN DEVELOPMENT



# Al Jouhar Boulevard Entertainment Area





**The Project** is Located in Jeddah, KSA

■ Al Jouhar Boulevard Entertainment Area

**Client** General Entertainment Authority

**Scope of Services,**

Arch and Engineering Design including Master Planning, Infrastructure, Architectural, Interior Landscape Design, Structural, Electrical, Mechanical life Safety and Construction Supervision

**Collaborates**

HRTi's Designs A/E Consultant Office



Al Jouhar Boulevard Entertainment Area



Al Massa Boulevard Entertainment Area





## ■ Al Massa Boulevard Entertainment Area

**The Project** is Located in Al-Khobar, KSA

**Client** General Entertainment Authority

### **Scope of Services,**

Arch and Engineering Design including Master Planning, Infrastructure, Architectural, Interior Design Landscape Design, Structural, Electrical, Mechanical, Life Safety, and Construction Supervision

### **Collaborates**

HRTi's Designs A/E Consultant Office

Al Dora Boulevard Entertainment Area





■ Al Dora Boulevard Entertainment Area



**The Project** is Located in Riyadh , KSA

**Client** General Entertainment Authority

**Scope of Services,**

Arch and Engineering Design including Master Planning, Infrastructure, Architectural, Interior Design Landscape Design, Structural, Electrical, Mechanical , Life Safety, and Construction Supervision

**Collaborates**

HRTi's Designs A/E Consultant Office

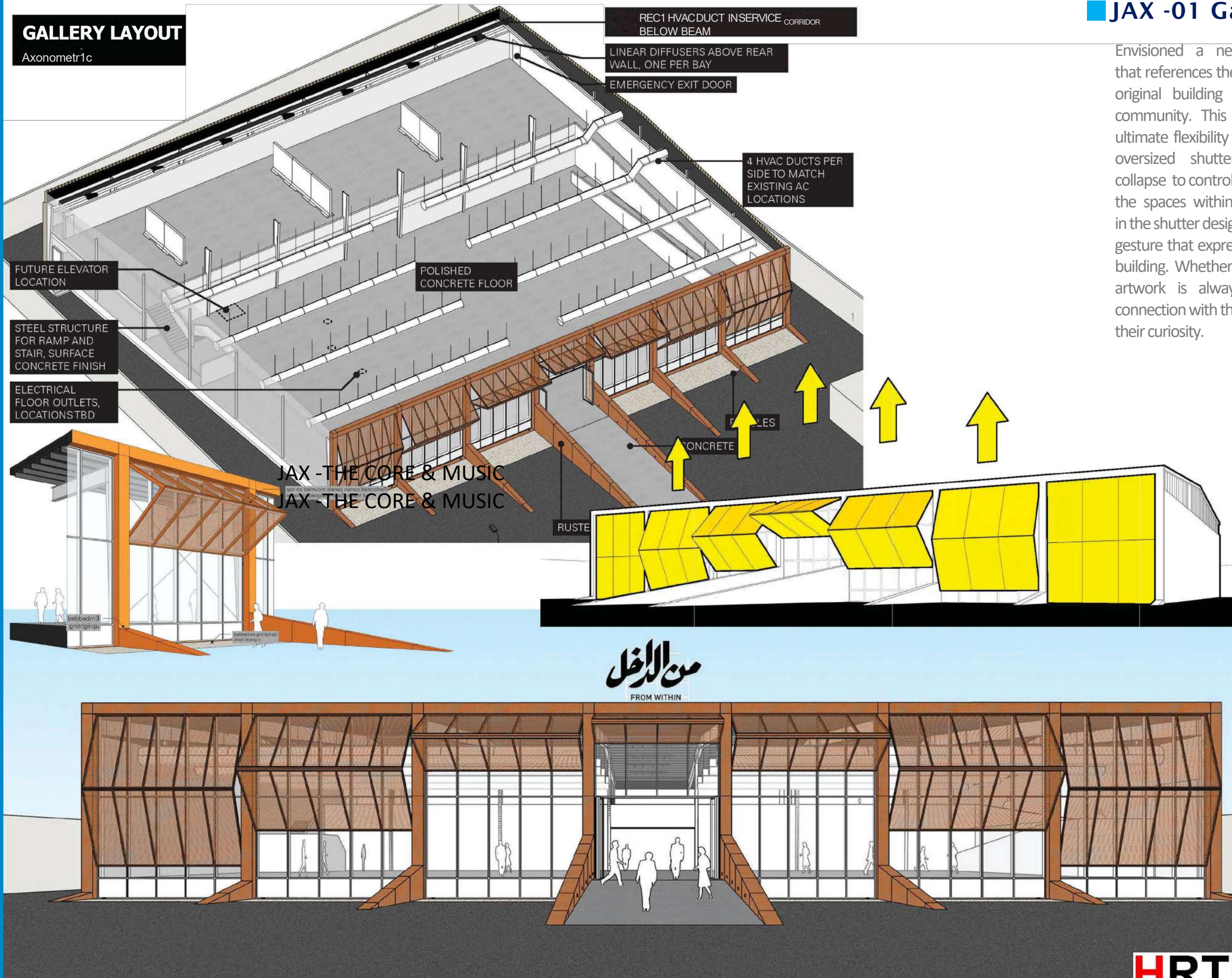


Jax - 01 - Gallerya AD - From Within



**JAX -01 Gallerya AD**

Envisioned a new, articulating façade that references the industrial roots of the original building and the surrounding community. This new design provides ultimate flexibility through the use of oversized shutters that expand and collapse to control the flow of light into the spaces within. Through a simple fold in the shutter design, we created an iconic gesture that expresses the life within the building. Whether inside or outside, the artwork is always visible, creating a connection with the visitors and capturing their curiosity.





The project is located in Riyadh, KSA

### Scope of Services

- Master Planning
- Master Planning
- Urban Design
- Architecture
- Buildings design Landscape design Interior design Building Construction
- Supervision Management Quantity survey, Review, and validity.





## ■ JAX -THE CORE & MUSIC

In the center of the JAX district, the project aims to generate a vibrant and dynamic life around culture and art while maintaining, through its architecture, the industrial identity.

**The project** is located in Riyadh, KSA

### Scope of Services

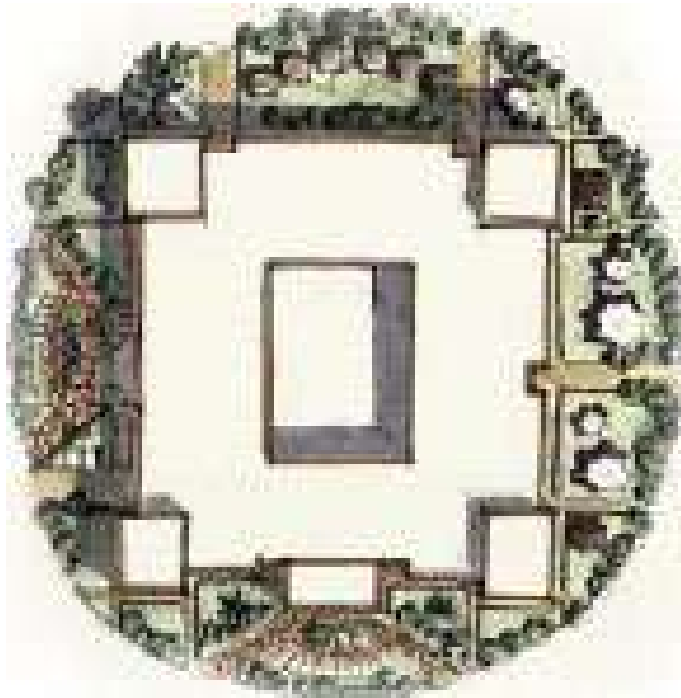
Master Planning  
Master planning  
Urban design  
Architecture  
Buildings design  
Landscape design  
Interior Design  
Building Construction  
Supervision Management Quantity survey,  
Review, and validity.



Jax –The Core & Music



## ■ The Heritage Village



The Heritage Village is distinguished by its wonderful castle-like design, while each of its five floors is dedicated to a specific region in the Kingdom. The beauty of Saudi heritage is highlighted through the décor, exhibits, and traditional seating areas.

Through the architecture, we can already tell the castle's story. Nestled quietly beside the seaside lives what looks like a real-life sand castle mirroring the look of the coarse sand from its tan and rough texture surrounding its wall, combined with an interior architecture with traditional designs and vibrant mosaic windows remind us that it is a place of significance.

The Heritage Village's integrated museum displays more than 7,000 heritage pieces.





**The project** is Located in Dammam, KSA

The land area of **6000 Sq.m**

### **Scope of Services**

Master Planning

Master Planning

Urban design

Architecture Buildings design

Landscape design Interior design

Building Construction

Supervision Management Quantity survey

### **Amenities**

3 floors Multi-Purpose mega hall Various restaurants of different scales Commercial stores Galleries Museum





# Technical Support

# Diriyah Gate Projects



## Diriyah Gate Projects



The culture of Saudi Arabia is a rich one that has been shaped by its Islamic heritage, its historical role as an ancient trade center, and its Bedouin traditions.

Saudi society has experienced tremendous development over the past several decades. The Saudi people have taken their values and traditions – their customs, hospitality, and even their style of dress – and adapted them to the modern world.

**The project** is located in Riyadh, KSA  
With total Area total area of **14-kilometer square**

**Client** Diriyah Gate Development Authority-  
Ministry Of Culture



### Scope of Services

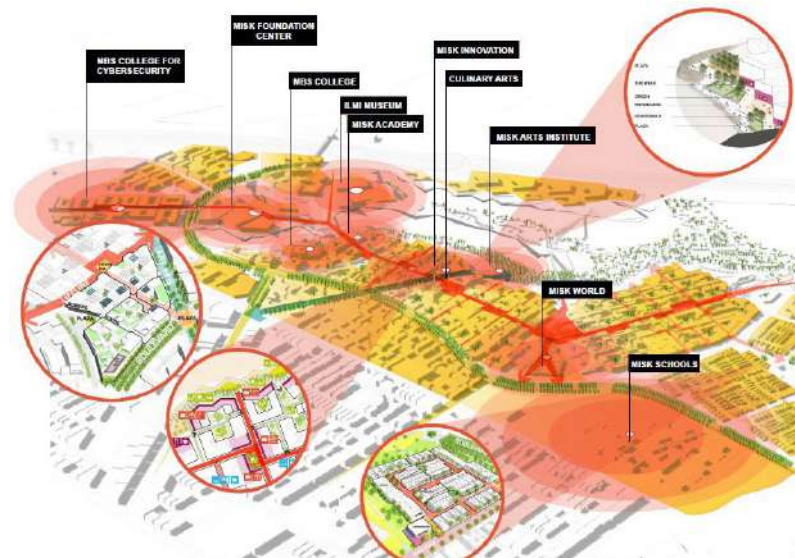
Diriyah Support, Studying and reviewing projects, licensing for all Projects, and supervising the implementation of Diriyah Authority Development projects

### Amenities

- 2 Basement
- Ground Floor
- First Floor
- Second Floor
- Including:-
  - Offices,
  - Workstations,
  - Meeting rooms,
  - Lounge/collaboration
  - Café/pantry,
  - Courtyards
  - Copy/print, IDF,
  - Canteen,
  - Multi-purpose,
  - Prayer room
  - Wellness/mothers room
  - Parking

Diriyah Gate Projects





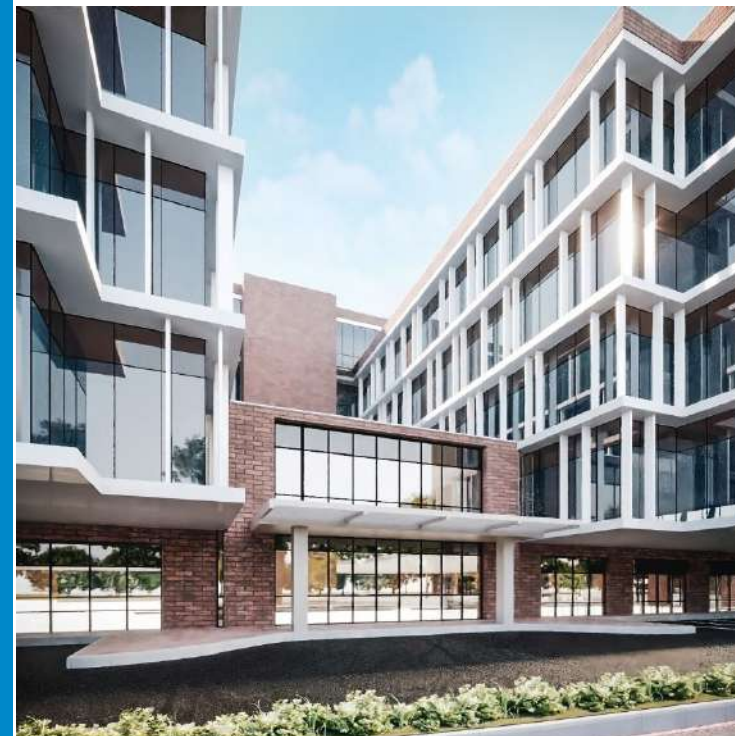
# HEALTH CARE

# Dawa Al-Salamah Hospital





# Dawa Al- Salamah Hospital



## ■ Dawa Al-Salamah

**The project** is located in Jizan, KSA With total Area of **9172.36 sq.m**

**Client** Sahleh Hussin Salem Al Salam Company

### Scope of Services

Medical Planning, Redesign  
Architectural Design  
Structural Design,  
MEP Design, Interior &  
Landscape Design and  
Construction Supervision

### Amenities

Number of beds 100  
Basement + Mezzanine  
Ground floor + 6 Floors  
Penthouse  
2 parking B+G 116-115 Slots

Dawa Al-Salamah Hospital



Dawa Al-Salamah Hospital



# AL- Saleem Hospital





## ■ AL-Saleem Hospital

**The project** is located in Riyadh, KSA With total Area of **1437.60 sq.m**

**Client** Dr Omar Saleem

### **Scope of Services**

Medical Planning, Redesign  
Architectural Design  
Structural Design,  
MEP Design, Interior &  
Landscape Design and  
Construction Supervision

### **Amenities**

Number of beds 70  
Basement + Mezzanine  
Ground floor + 6 Floors  
Penthouse  
Parking



■ Raddah Hospital  
Long Term care  
Hospital

**The project** is located in Riyadh,  
KSA With total Area of **1578.75**  
**sq.m**

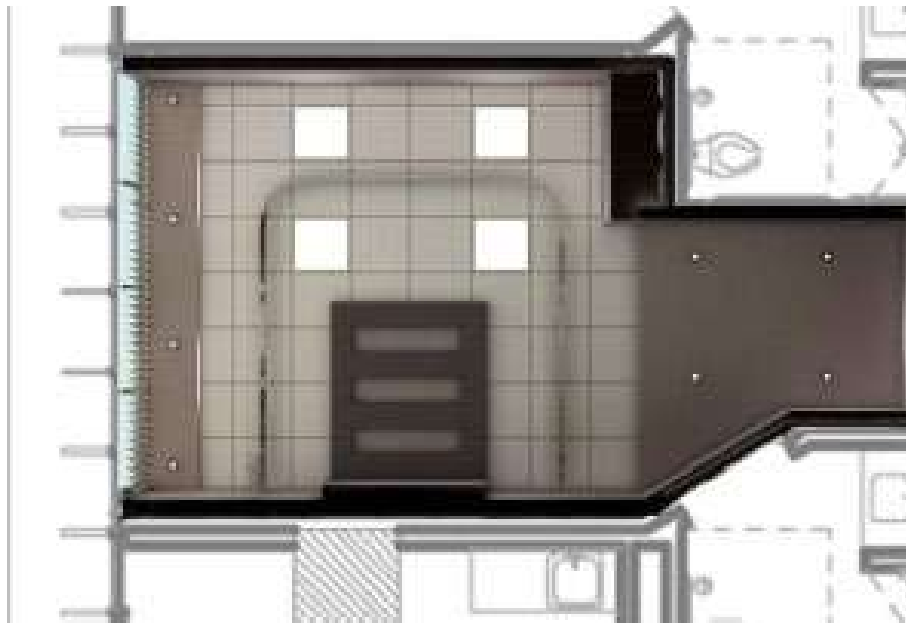
**Client** Raddah

**Scope of Services**

Medical Planning, Redesign  
Architectural Design  
Structural Design,  
MEP Design, Interior &  
Landscape Design and  
Construction Supervision

**Amenities**

99 Bed  
Basement 1.2  
Ground floor + 11 Floors  
Penthouse





## ■ Health Club

**The project** is located in Jeddah, KSA With total Area total area of **19,598 sq.m**

**Client** Fayez Jamil Zagzoog

### **Scope of Services**

Architecture Engineering  
Technical office

### **Amenities**

Residential compound  
Spa, internal swimming pool  
Restaurants  
Multipurpose playground  
(Basketball, Volleyball,  
Handball)





AL MOUWASAT HOSPITALS



■ AL MOUWASAT HOSPITALS



**Amenities**

Clinics 60  
 Number of beds 200 I/C beds 70  
 height of five floors, and parking spaces for 500 cars  
 Advanced digital operating rooms  
 The smart pharmacy that dispenses medicines using an automated robot

The project is located in Dammam, KSA With total Area of **26,580 sq.m**

**Client** Al Mouwasat Medical Services

**Scope of Services**

Supervision Consultancy, -Overall General Architectural and Managerial Supervision of The Whole Project with a Close Observation of Materials and Equipment deliveries, Manufacturing Processes, and Construction confirming It's in line with the general specification need and Testing it if needed



# HOSPITALITY



**Amenities**

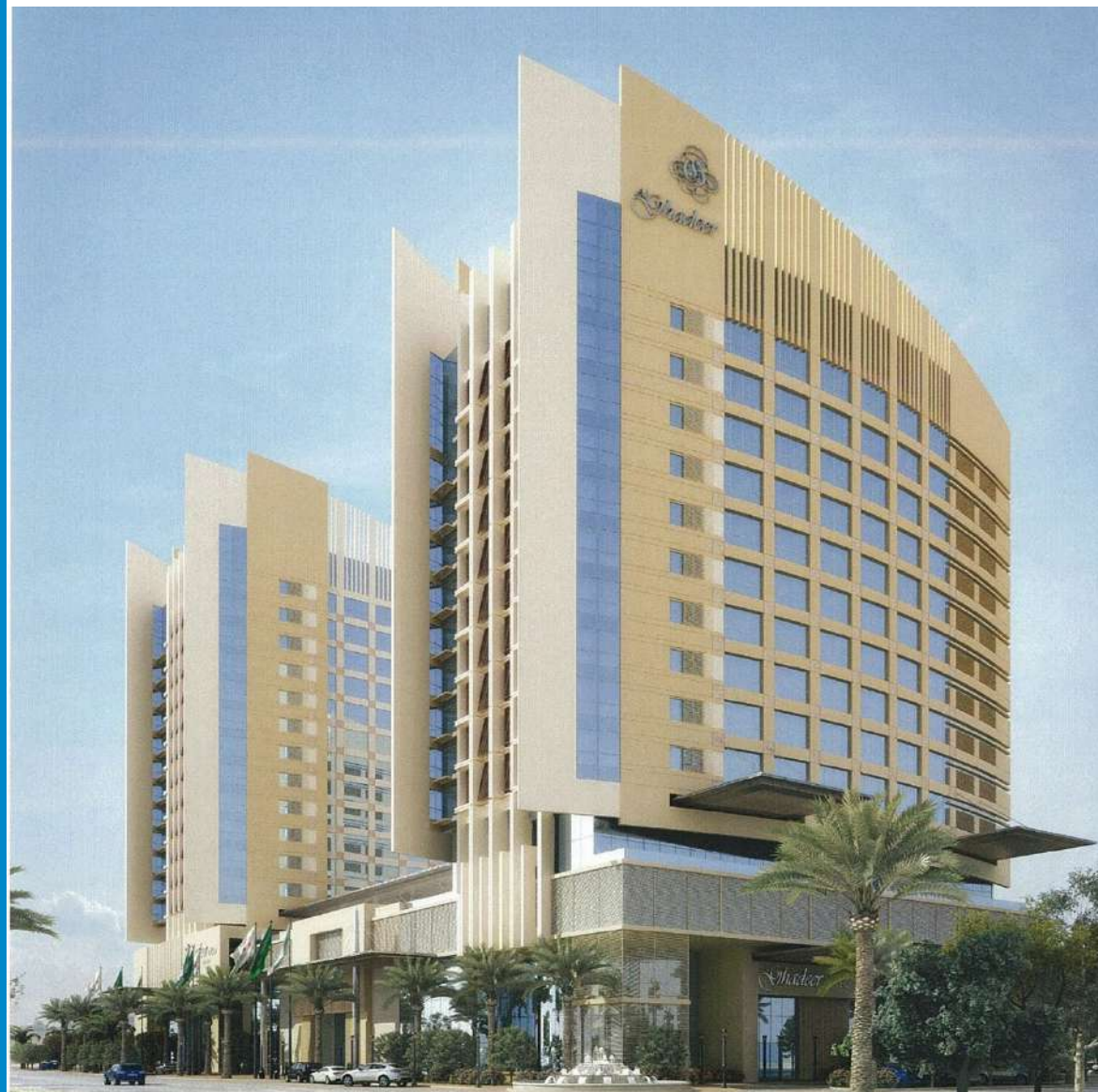
- 12 floors Residential building
- 60 Apartments
- 17 floors Hotel building
- 335 Guest rooms
- Villas
- Ceremony hall
- Main lobby
- Back area

**The project** is located in Riyadh, KSA With total **10,000 sq.m**

**Client** Sheikh Abdul Kader Shiebat Al- Hamad

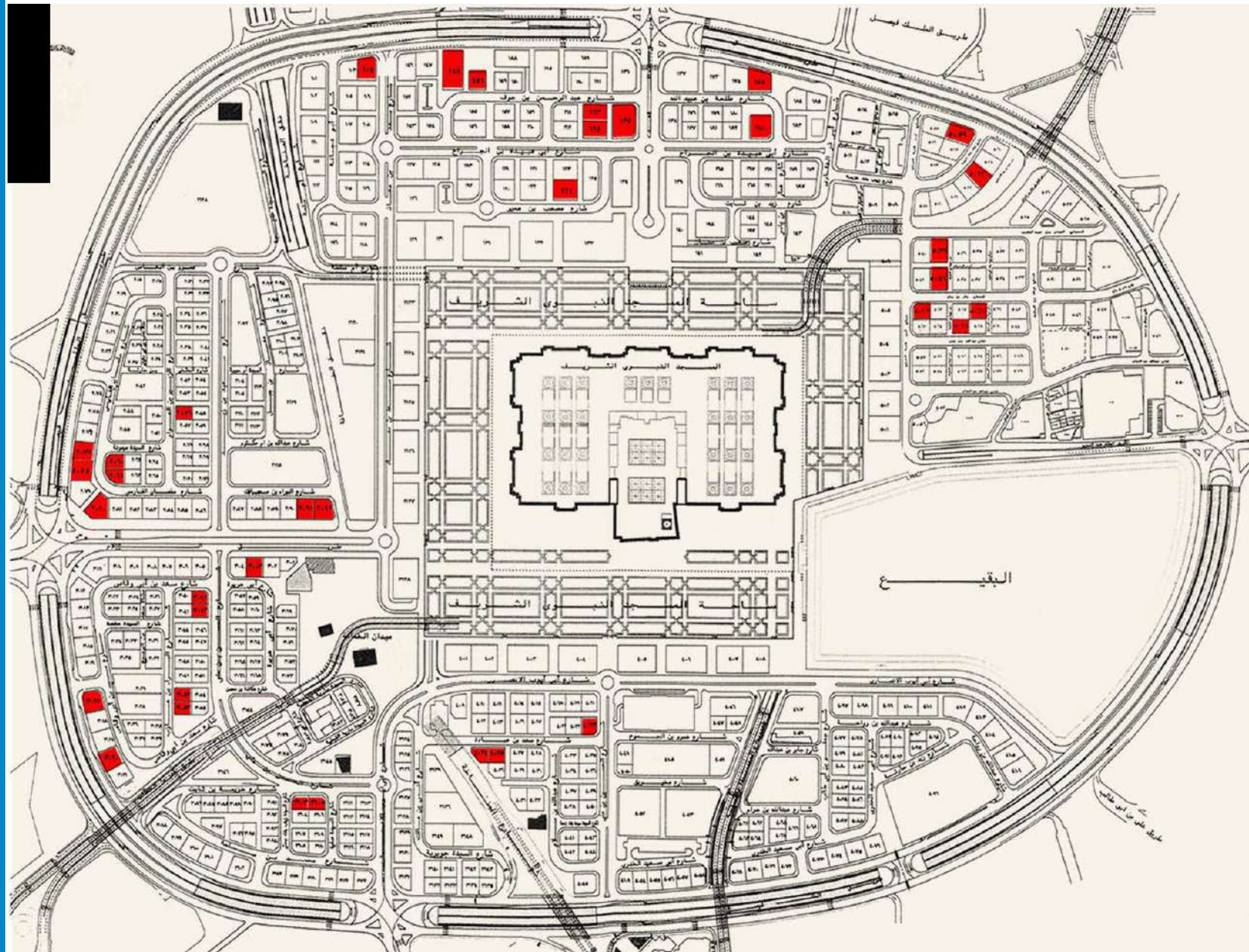
**Scope of Services**

Arch and Engineering Design including, Infrastructure, Architectural, Interior Design Landscape Design, Structural, Electrical, Mechanical, Life Safety and Construction Supervision





# ALMADINAH ALMONAWARAH HOTELS



5066

148



2077



Our role was to maintain the spirit of Arabic style to fit with the Saudi Arabic Islamic style throughout our Architectural and interior design as well as to provide our Structural Design, MEP Design, Construction Supervision Quantity Survey, landscape Design

# Ramada Hotel in Medina , KSA



## Ramada Hotel in Medina , KSA

**The Project** is on approx.  
land area of **1057.9 sq.m**

**Client** Sheikh Abdul Qadir  
Shaybah Al-Hamad

### Scope of Services

Arch and Engineering  
Design including  
Infrastructure,  
Architectural, Interior  
Design, Structural,  
Electrical, Mechanical,  
Life Safety, and  
Construction  
Supervision

### Amenities:

3 Basements  
Ground floor  
Mezzanine  
14 Typical floors  
235 Rooms and 14  
suites



# Hotel in Medina , KSA



## Hotels in Medina , KSA

**The Project** is on approx. land area of **824.50 sq.m**

**Client** Real Estate Al-Muhaisin

### Scope of Services

Arch and Engineering Design including Infrastructure, Architectural, Interior Design, Structural, Electrical, Mechanical, Life Safety, and Construction Supervision

### Amenities:

3 Basements  
Ground floor  
Mezzanine  
10 Typical offices  
200 Deluxe Rooms



## Hotels in Medina, KSA

The Project is on approx. land area of **500 sq.m**

**Client** Sheikh Faisal Al - Mutabbani

### Scope of Services

Arch and Engineering Design including Infrastructure, Architectural, Interior Design, Structural, Electrical, Mechanical, Life Safety, and Construction Supervision

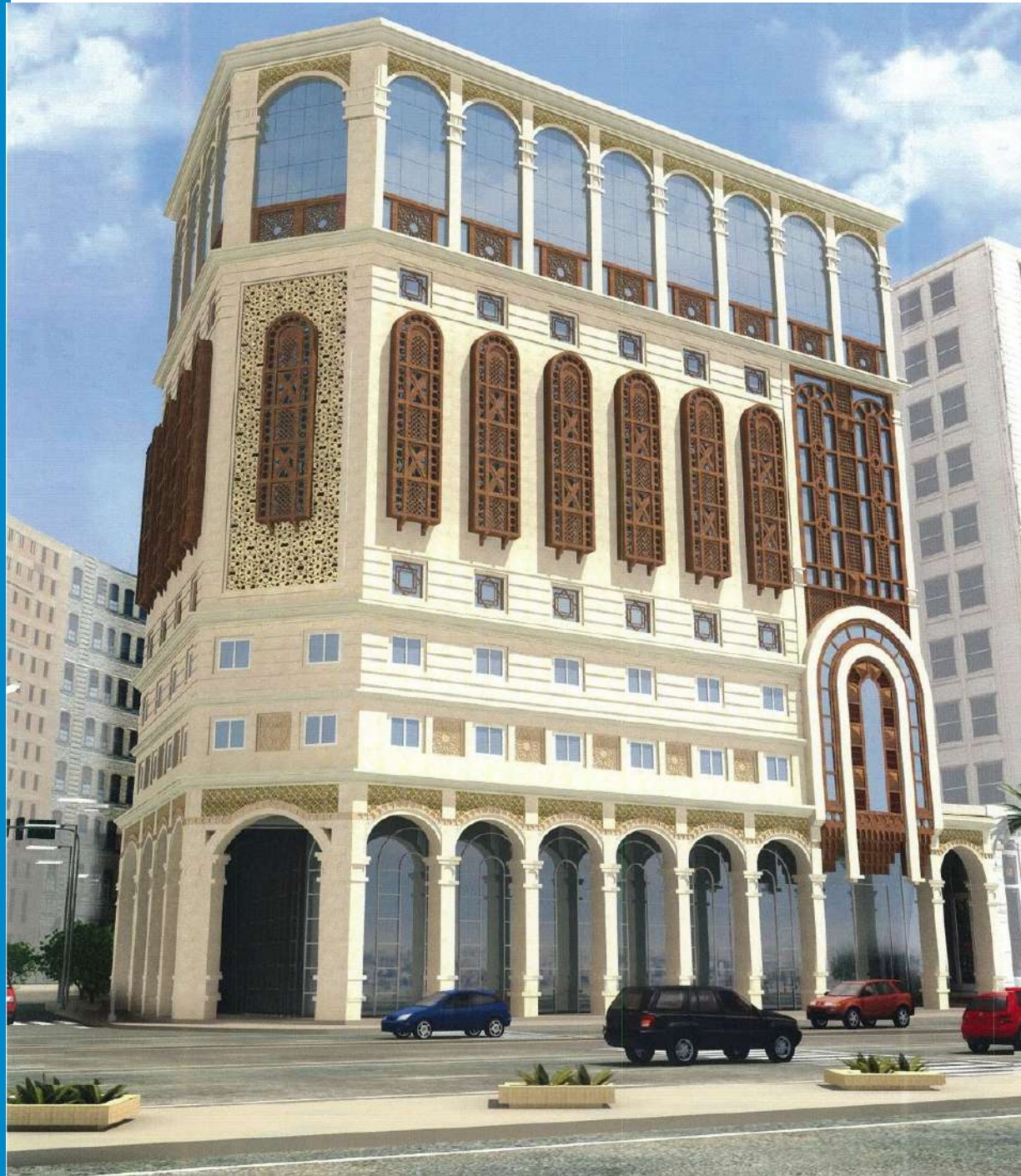
### Amenities:

3 Basements  
Ground Floor  
Mezzanine  
54 Room  
10 Typical offices  
Rooms  
31 Suites.



## Hotels in Medina , KSA

An elegant piazza with promenades all around the ground and a mezzanine floor for retails as in Saudi permits - like main hotel drop-off for visitors & guests, Guests up to the main lobby in the hotel, with an array of world amenities, including guest rooms & hotel suites, restaurants lounges, and function spaces arranged in a way that serves the guest rooms, We also designed the facades in Arabic style to fit with the Saudi Arabic Islamic style and this hotel was one of the 42 hotels we designed in Madinah, KSA and this hotel served the people in the pilgrimage season The best views from the development to the city beyond are preserved for the hotel guest rooms and suites, creativity a hospitality experience in KSA.



**The Project** is on approx. land area of **1057.9 sq.m**

**Client** Real Estate Al-Muhaisin

### Scope of Services

Arch and Engineering Design including Infrastructure, Architectural, Interior Design, Structural, Electrical, Mechanical, Life Safety, and Construction Supervision

### Amenities:

4 Basements  
Ground floor,  
Mezzanine,  
14 typical offices,  
420 Rooms





## Hotels in Medina , KSA

**The Project** is on approx. The land area of **1057.9 sq.m**

**Client** Real Estate Al-Muhaisin Rabia Development Company

**Scope of Services**  
Arch and Engineering Design including Infrastructure, Architectural, Interior Design, Structural, Electrical, Mechanical, Life Safety, and Construction Supervision

**Amenities:**  
2 Basements  
Ground floor  
Mezzanine  
13 Typical offices  
310 Rooms



challenge An elegant piazza with promenades all around the ground and a mezzanine floor for retails as in Saudi permits - like main hotel drop-off for visitors & guests, Guests up to the main lobby in the hotel, with an array of world amenities, including guest rooms & hotel suites, restaurants lounges and function spaces arranged in a way that serve the guest rooms, We also designed the facades in Arabic style to fit with the Saudi Arabic Islamic style and this hotel was one of the 42 hotels we designed in Madinah, KSA and this hotel served the people in the pilgrimage season The best views from the development to the city beyond are preserved for the hotel guest rooms and suites, creativity a hospitality experience in KSA.



## Hotels in Medina , KSA

**The Project** is on approx. land area of **1057.9 sq.m**

**Client** Real Estate Al- Muhaisin

### Scope of Services

Arch and Engineering Design including Infrastructure, Architectural, Interior Design, Structural, Electrical, Mechanical, Life Safety, and Construction Supervision

### Amenities:

- 2 Basements
- Ground floor
- Mezzanine
- 10 Typical Floors (Standard Rooms)
- 150 Deluxe Rooms

# Hotel in Medina , KSA



## Hotels in Medina , KSA

**The Project** is on approx. The land area of **1057.9 sq.m**

**Client** Al RabeH Real Estate Development Company

### Scope of Services

Arch and Engineering Design including Infrastructure, Architectural, Interior Design, Structural, Electrical, Mechanical, Life Safety, and Construction Supervision

### Amenities:

- 2 Basements
- Ground floor
- Mezzanine
- 10 Typical offices
- 140 Rooms
- 39 Suites



## Hotels in Medina , KSA

**The Project** is on approx.  
The land area of **1018 sq.m**

**Client** Real Estate Al-Muhaisin

### Scope of Services

Arch and Engineering Design including Infrastructure, Architectural, Interior Design, Structural, Electrical, Mechanical, Life Safety, and Construction Supervision

### Amenities:

4 Basements  
Ground floor  
Mezzanine  
14 Typical floors  
420 Deluxe Rooms



## Hotels in Medina , KSA

The Project is on approx.  
The land area of **500 sq.m**

**Client** Real Estate Al-Muhaisin

### Scope of Services

Arch and Engineering Design including Infrastructure, Architectural, Interior Design, Structural, Electrical, Mechanical, Life Safety, and Construction Supervision

### Amenities:

3 Individual hotels comprising  
760 guestrooms  
70 suites with all utilities





## Hotels in Medina , KSA

The Project is on approx.

The land area of **16,027 sq.m**

Client ALNAKHEEL GROUP

### Scope of Services

Arch and Engineering Design including Infrastructure, Architectural, Interior Design, Structural, Electrical, Mechanical, Life Safety, and Construction Supervision

### Amenities:

3 Basements      Ground floor Mezzanine  
16 Typical floors  
420 Deluxe Rooms





## Rixos Hotel Development Project

The Project is on approx.

The land area of **262.000 sq.m**

**Client** FTG Development Company

### Scope of Services

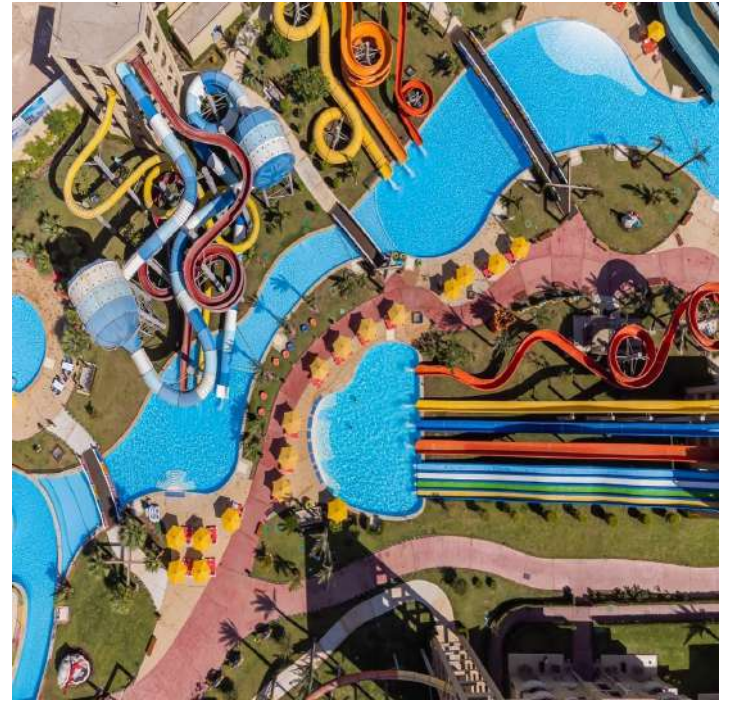
Design review  
consultant Supervision

### Amenities:

Beach resort  
7 stars Hotel  
Villas Water Park  
Marina



Rixos Hotel Development Project





## ■ Movenpick Hotel 6<sup>th</sup> of October City, Egypt

**The Project** is Located on the 6th of October City, Egypt in on approx. land area of **16,500 sq.m**

**Client** Media Production City

### Scope of Services

Arch and Engineering Design including, Infrastructure, Architectural, Interior Design - Landscape Design, Structural, Electrical, Mechanical - Life Safety and Construction Supervision

### Amenities:

Multiple-use complex A five-star hotel Convention center Shopping mall Cultural center Swimming pool



Movenpick Hotel - Egypt



Movenpick Hotel - Egypt



# EDUCATIONAL

AlFaislah Islamic Schools





## Al Faisliah Islamic Schools Al Khobar, KSA

**The Project** is Located in Al  
Kohbar, KSA

**Client** Ma'arif

### Scope of Services

Design and review, Construction  
Supervision  
Architect of Record

### Amenities:

Renovation of School Building  
Elementary School  
Secondary School  
International School

AlFaisliah Islamic Schools







## Manarat Al-Khobar Schools Al Khobar, KSA

**The Project** is Located in Al Kohbar, KSA

**Client** Ma'arif

### Scope of Services

Re-Design - Architectural Design , Interior Design Structural Design Electrical, Mechanical Design, safety design, and construction Supervision

### Amenities:

New International School Building Design



## ■ ROWAD ALKHALEEJ INTERNATIONAL SCHOOL

**The Project** is Located in Al Jeddah -KAEC, KSA in approx. land area **20,418 m<sup>2</sup>**

**Client** Al-Khaleej for Training and Education Co.

### **Scope of Service**

DESIGN REVIEW FOR:  
ARCHITECTURAL  
MECHANICAL  
ELECTRICAL  
STRUCTURAL  
TIS & EIA STUDIES

### **Amenities:**

New International School  
Building Design

### **Situation :**

UNDER CONSTRUCTION

■ Elit international school

The Project is in approx. land area **25,720.80 Sq.m**

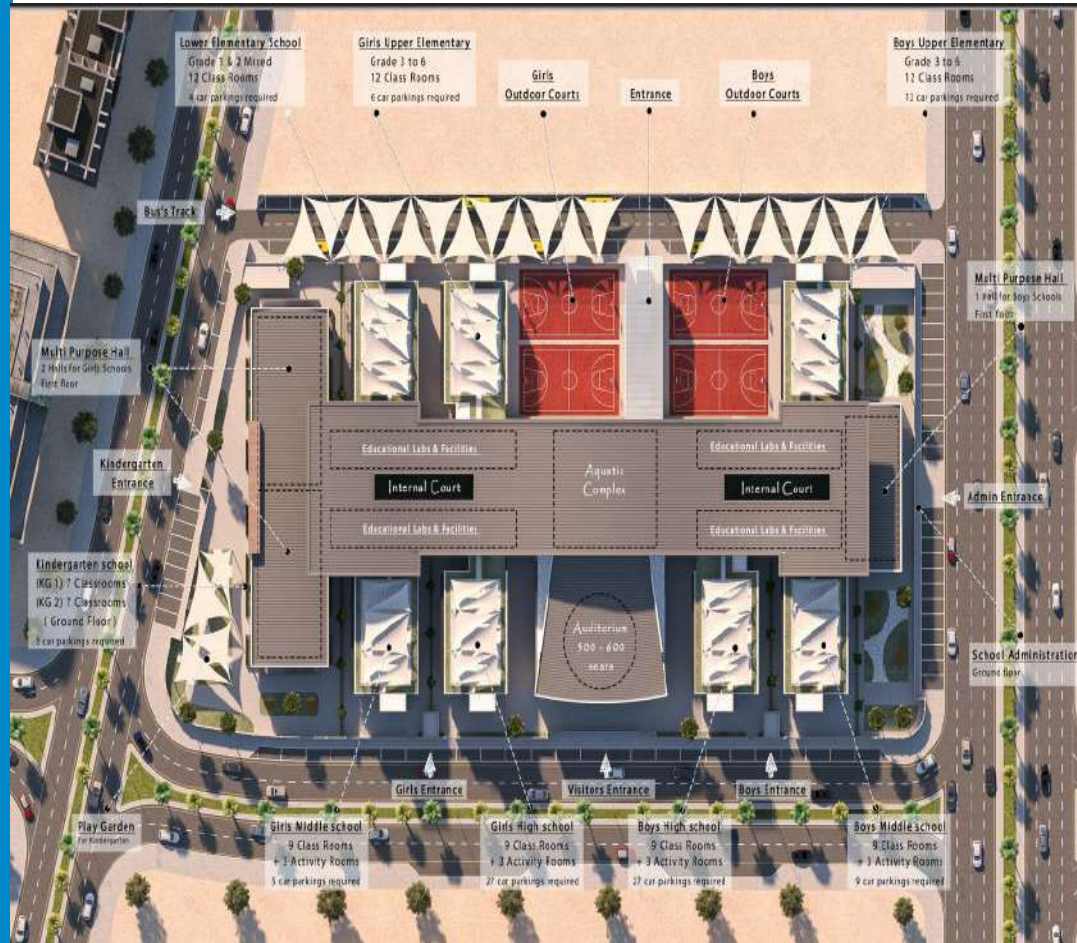
Client Elit international

Scope of Services

Design review and code consultancy

Amenities:

Administration, KG, Primary school, Preparatory school, Secondary school  
Playgrounds, and multi-Purpose hall.





## Al Qunfoda Campus

Umm Al-Qura University Al-Qunfudah, KSA

**The Project** is located in Qunfudah, KSA in approx. land area **200,000 Sq.m**

**Client** Umm Al Qura University

### Scope of Services

Arch and Engineering Design including Master Planning, Infrastructure, Architectural, Interior - Landscape Design, Structural, Electrical, Mechanical - Life Safety

### Amenities:

- Classrooms
- Lecture rooms
- Library
- Playgrounds





## ■ NAJD NATIONAL SCHOOL - RIYADH

**The Project** is Located in Riyadh, KSA in approx. land area **72,612 Sq.m**

**Client** NAJD NATIONAL

### **Scope of Services**

Architectural design,  
Landscape design interior design

### **Amenities:**

Educational building  
Kindergarten building  
Administration building  
Swimming pool Basketball court Maintenance building

# Faculty of Computer Science

**The Project** in approx. land area **6,216 m2**

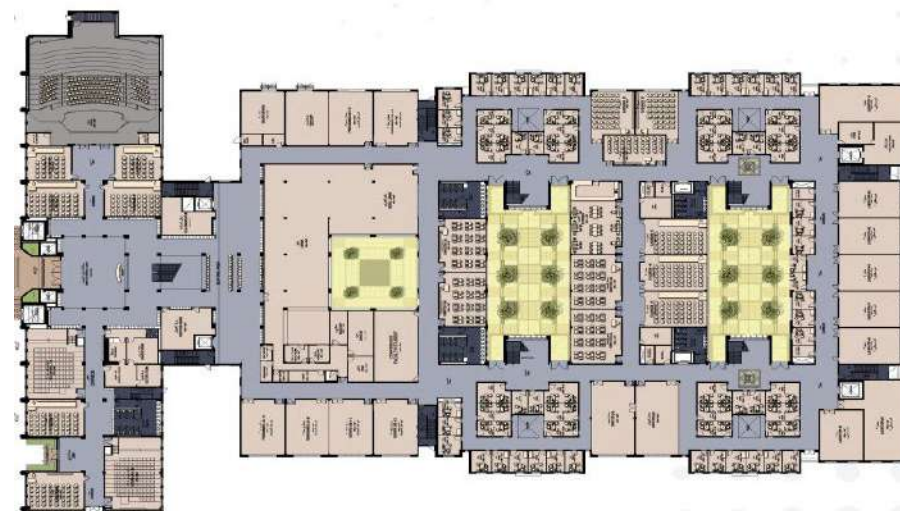
**Client** Ministry of Education

### Scope of Services

Architectural Design  
Engineering, Technical  
evaluation, and studies

### Amenities:

- Lecture rooms
- computer labs
- administrative places
- theater hall
- Service locations
- Cafeterias
- stores



# New Taibah School and Calligraphy complex



## ■ New Taibah School and Calligraphy complex

**The Project** in approx. land area **27.467 Sq.m**

**Client** NAJD NATIONAL

### Scope of Services

Technical support to intl. Design firm during concept Design then undertake rest of The Design phases & Tander preparation

### Amenities:

Administration,  
KG,  
primary school,  
preparatory school,  
secondary school  
playgrounds, and multi-purpose hall





## Umm AlQura University

Makkah, KSA

The challenge was to build 5 faculties along the master plan girls' spine considering all functional and privacy requirements.

Coordination with the existing spine, landscape, and buildings was a real challenge in the project in addition to considering prototypes in all details and design elements

### Solution

The faculties were designed considering all aspects and professionally coordinated with the existing spine and its construction work.

The building used precast cladding technology and its architectural style considered the existing university creating a homogeneous style for all the university constructed phases. The building has very good studied circulation, especially in terms of service circulation and creating privacy for the female students in the Saudi community

**The Project** is Located in KSA on approx. the land area of **1,200,000 sq. meters**

**Client** Umm Al Qura University

### Scope of Services:

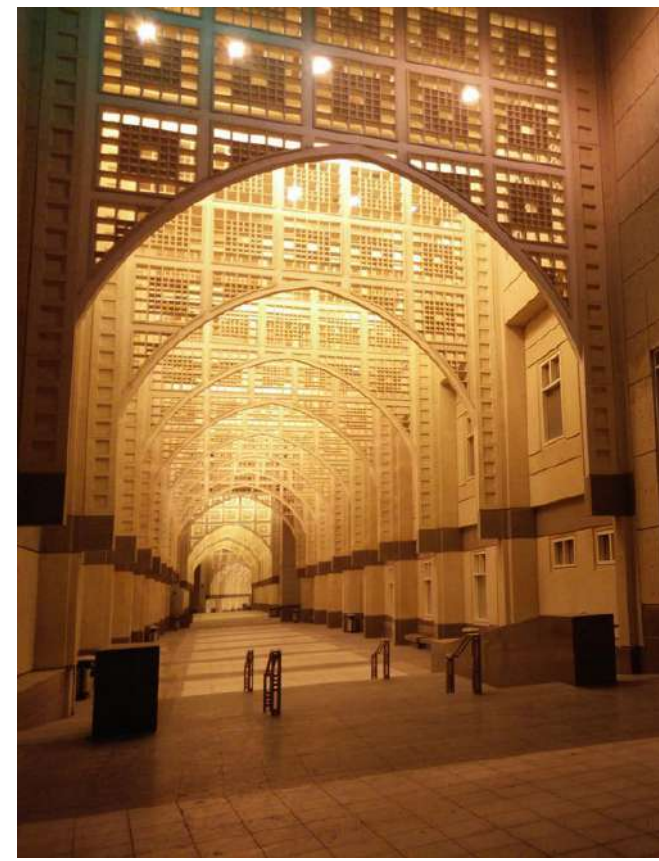
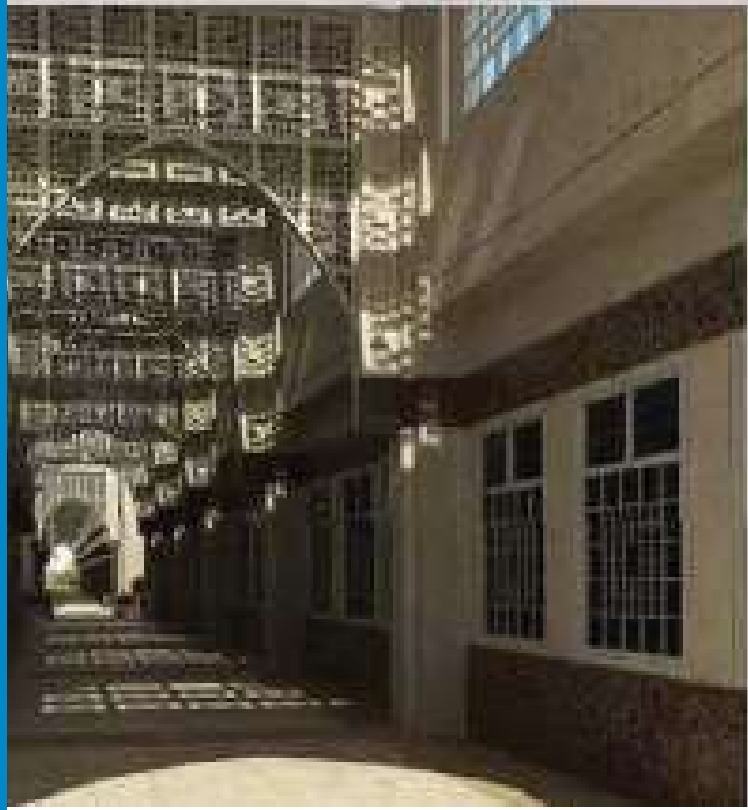
Arch and Engineering Design including Master Planning, Infrastructure, Architectural, Interior Design - Landscape Design, Structural, Electrical, Mechanical - Life Safety, and Construction Supervision

### Amenities:

Residential buildings, Administration, Commercial buildings, Restaurants Shopping mall, Service building, Two commercial Parking areas, Open area Faculty of Education Faculty of Social Science Faculty of Computer Faculty of Art & Interior design Faculty of Islamic da'wa



UMM AL-QURA UNIVERSITY





## ■ Faculty of Law Libya

**The Project** in approx. land  
area **25,050 m<sup>2</sup>**

**Client** Al Fateh University

### **Scope of Services**

Architectural Design  
Engineering  
Construction Supervision

### **Amenities:**

3 floors  
4 Reading halls  
25 Seminar rooms  
20 Staff rooms  
25 Administration offices Library  
Computer center



# Faculty of Economics - Libya



## ■ Faculty of Economics Libya

**The Project** in approx. land  
area **25,050 m<sup>2</sup>**

**Client** Al Fateh University

### **Scope of Services**

Architectural Design

Engineering

Construction Supervision

### **Amenities:**

4 floors Classrooms Staff

rooms Section rooms

Administration offices Library

Computer Center



**The Project** in approx. land area **130.000 m2**

**Client** Mass Media

**Scope of Services**

Arch and Engineering Design including Master Planning, Infrastructure, Architectural, Interior Design, Landscape Design, Structural, Electrical, Mechanical, Life Safety, and Construction Supervision

**Amenities:**

- Academy Buildings,
- Theaters,
- Hostel ,
- Studios
- Mall



# COMMERCIAL BUILDING

**HYPER MALL**



Americana Restaurants and Drive through

Americana Restaurants and Drive Through

The Project is located in AlSulaimanyah, Riyadh, KSA

Client Americana

Scope of Services

Design and review, Construction Supervision, Architect of Record



**Americana Restaurants and Drive Through**

**The Project** is located in Arrayan, Riyadh, KSA

**Client** Americana

**Scope of Services**

Design and review, Construction Supervision, Architect of Record

**Description**

Renovation Exterior & Interior





Americana Restaurants and Drive through

Americana Restaurants and Drive Through

The Project is located in Dammam, KSA

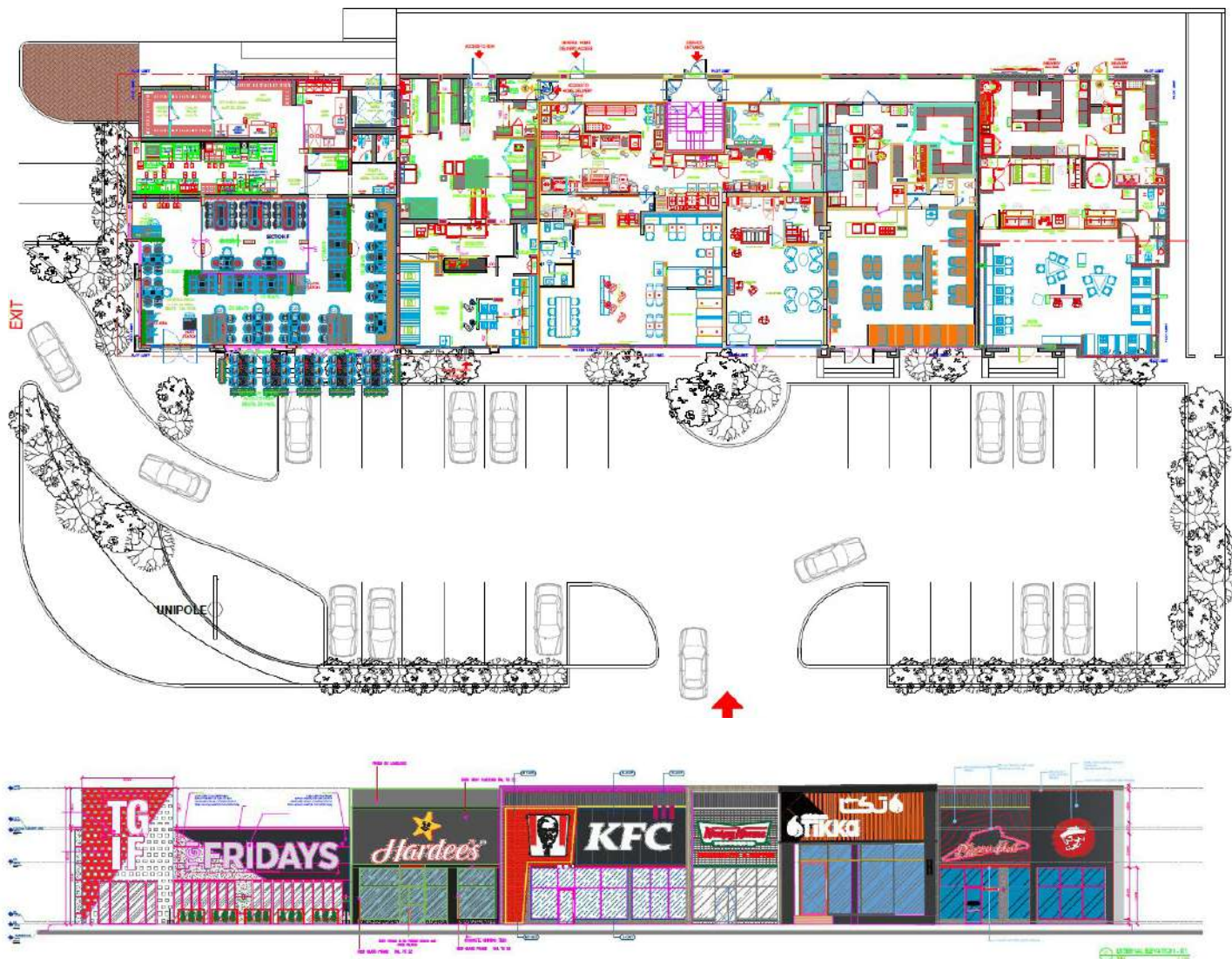
Client Americana

Scope of Services

Design and review, Construction Supervision, Architect of Record

Description

Renovation Exterior & Interior





## Hyper Market Al Tamimi

The Project is located in

Dammam, KSA

In approx. land area **17,838 Sq.m**

Client Al Tamimi

### Scope of Services

Architecture Engineering & Spaces

### Amenities:

Al Tamimi hyper market  
Retail  
Food court  
Parking





## NATIONAL COMMERCIAL BANK, JEDDAH – KAEC

**The Project is located** in Jeddah, KSA In approx. land area **28,178 Sq.m**

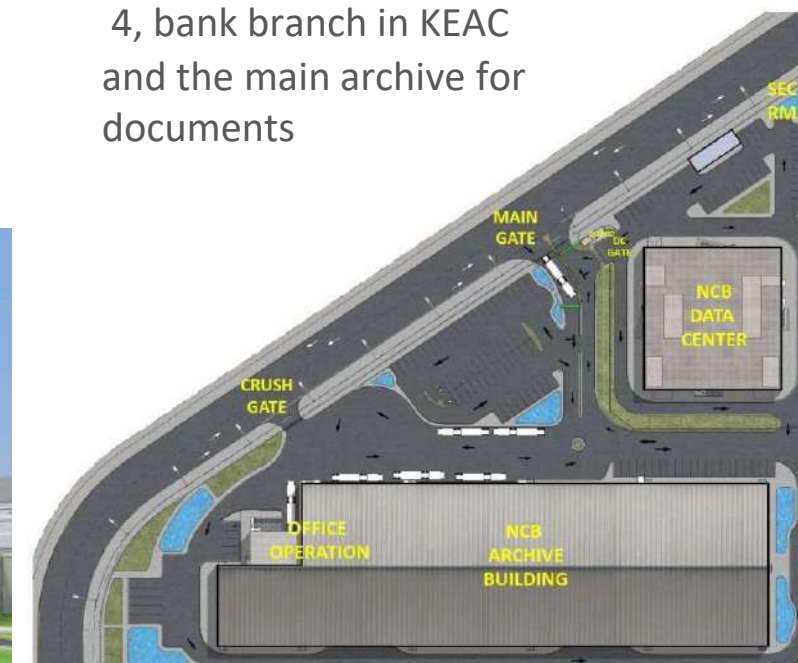
**Client** National Commercial Bank. Developer: Emaar The Economic City (EEC)  
Authority: The Economic Cities Authority (ECA).

### Scope of Services

Design Review –  
AOR & Construction  
Inspection

### Amenities:

The project is the main data center for the NCB tier 4, bank branch in KEAC and the main archive for documents



# ADMINISTRATION BUILDING



## Office Building

United Takamul

Prince Maged Road, Jeddah, KSA

**The Project is located** in Prince Maged Road, Jeddah, KSA In approx. land area **17,030 Sq.m**

**Client** United Takamul

### Scope of Services

Arch and Engineering Design including Master Planning, Infrastructure, Architectural, Interior - Landscape Design, Structural, Electrical, Mechanical - Life Safety and Construction Supervision

### Amenities:

Guest rooms & apartments Office spaces

Hypermarket

Shopping mall & parking





## Business Park

**The Project is** In approx. land area **35,000 Sq.m**

**Client** Skab Real Estate Co.

### Scope of Services

Architectural design

### Amenities:

3 office buildings Podum contains retail and recreational Facilities





## Office Building

Al Wabel Trading Group  
Dammam, KSA

**The Project** is Located In  
Dammam, KSA on approx.  
land area **3,400 Sq.m**

**Client** Al Wabel Trading  
Group

### Scope of Services

Arch and Engineering  
Design including  
Infrastructure,  
Architectural, Interior  
Design, Structural,  
Electrical, Mechanical, Life  
Safety, and Construction  
Supervision

### Amenities:

Guest rooms  
Apartments Office  
spaces  
Shopping mall & parking



## ■ Cultural Complex

Ministry of Culture

**The Project** is at approx. land area **2,000 Sq.m**

**Client** Ministry of Culture  
**Scope of Services**

Architecture Design  
Engineering

### **Amenities:**

10 stories Culture Building  
Administration Offices  
Underground car parking  
Art Galleries





# Nakhla Office Building in Riyadh



## ■ Nakhla Office Building

Riyadh , KSA

**The Project** is Located in Riyadh, KSA at approx. land area **60,000 Sq.m**

**Client** Al-Rashed and Al-Amoudi Company

### **Scope of Services**

Architecture Design

Engineering

### **Amenities:**

2 Basement floors

3 commercial floors

26 administrative floors

5-star restaurant

# Mixed Use Tower in South Obhur



## ■ Mixed Use Tower in South Obhur

Obhur , KSA

**The Project** is Located in Obhur, KSA at approx. land area **60,000 Sq.m**

**Client** Dr.Sultan bin ali bin Musallam

### Scope of Services

Concept design

### Amenities:

Guest rooms &  
Apartments  
Office spaces  
Hypermarket  
Shopping mall & parking

# INDUSTRIALS

# Southern Factory for Cardboard Project



## ■ Southern Factory for Cardboard

The Project is at approx. land area **58'446.00 Sq.m**

**Client** SOUTHERN FACTORY FOR PAPER PRODUCTS. CO. LTD

### Scope of Services

Design review consultant For  
ARCHITECTURAL  
MECHANICAL  
ELECTRICAL  
STRUCTURAL  
TIS & EIA STUDIES

### Amenities:

PRODUCTION AREA  
RAW MAT ADMIN AREA  
FINISHED PROD UTILITY  
AREA



## AlQudra factory

The Project is at approx. land area **30.014 Sq.m**

Client KING ABDULLAH ECONOMIC CITY

### Scope of Services

Design review consultant For

ARCHITECTURAL  
MECHANICAL  
ELECTRICAL  
STRUCTURAL  
TIS & EIA STUDIES

### Amenities:

The Central Core hosts the incubators. Business Center Entrepreneurship School.

FACTORY 01

FACTORY 02 ( Hess)

Concrete

plant Future

extension

Administration Building

Scale

WORKSHOP,

Substation CAR

PARKING 82 car

Security, TRUCK PARKING 13

trucks

Stockyard

Raw materials



## ■ Cement product industry factory

**The Project** is Located in Jeddah KAEC at approx. land area **27,759 Sq.m**

**Client** Cement Product Industry Co.LTD.

### Scope of Services

Design review consultant For

ARCHITECTURAL  
MECHANICAL  
ELECTRICAL  
STRUCTURAL  
TIS & EIA STUDIES

### Amenities:

WAREHOUSE  
ADMINISTRATION  
CARS PARKING BUSES  
PARKING TRUCKS  
PARKING EXTERNAL  
STORAGE SECURITY  
COVERED OUTDOOR AREA  
FOR DRIVER'S PRODUCTION  
AREA



## ■ CIGALAH GROUP

### PHARMACEUTICAL FACTORY

**The Project** is Located in Jeddah-KAEC at approx. land area **32,053 Sq.m**

**Client** CIGALA MU LT I INDUSTRIES CO

#### Scope of Services

Design review consultant For

ARCHITECTURAL  
MECHANICAL  
ELECTRICAL  
STRUCTURAL  
TIS & EIA STUDIES

#### Amenities:

Administrative Building  
Pharmaceutical  
Laboratories cooling zones  
Raw material warehouses  
Finished Material  
Warehouses  
The mosque  
Changing areas  
Waste disposal  
areas



## NATIONAL PAINTS NATIONAL PAINTS FACTORY

**The Project** is Located in Jeddah-  
KAEC at approx. land area **53,472**  
**Sq.m**

**Client** NATIONAL PAINTS CO

### Scope of Services

Architectural and Engineering  
Design including Master Planning,  
Infrastructure, Architectural,  
Interior Design - Landscape  
Design, Structural, Electrical,  
Mechanical - Life Safety, and  
Construction Supervision

### Amenities:

157 residential units Commercial  
Zone  
Clubhouse  
Multi-use building  
Sports club & Gardens





## ■ Apex Pharma Factory

**The Project** is Located in  
KAEC at approx. land area  
**49,891 Sq.m**

**Client** Multi Apex Pharma Co

### Scope of Services

Design Review for Master  
Plan, infrastructure,  
Architectural, Structural  
Electrical, Mechanical, safety  
design - AOR & Construction  
Inspection

### Amenities:

Pharmaceutical  
laboratories  
Administrative building  
cooling zones  
Raw material warehouses  
Finished Material  
Warehouses  
The mosque  
Changing areas  
Waste disposal  
areas

# RESIDENTIAL

# El Rashed Compound Al Jubail, KSA



## ■ El Rashed Compound Rashed El Rashed & Sons Group Al Jubail, KSA

**The Project** is Located in Al Jubail, KSA at approx. land area **320,000 Sq.m**

**Client** Rashed El Rashed & Sons Group

### Scope of Services

Master planning  
Architectural design  
Engineering

### Amenities:

157 residential units  
Commercial Zone  
Clubhouse  
Multi-use building  
Sports club & Gardens



**HRTI'S Designs**  
A/E Consultant Office



# Zahran villas , Riyadh, KSA



## Zahran villas

Zahran Riyadh, KSA

**The Project** is Located in Zahran Riyadh, KSA at approx. land area **17,173 Sq.m**

**Client** Zahran

### Scope of Services

Architectural design  
Engineering

### Amenities:

The reception building  
5 villas  
Playgrounds



## ■ Olayia project

**The Project** is at approx. land area **25,720.80 Sq.m**

**Client** Saudia Real Estate Development Company

### **Scope of Services**

Design review and code consultancy

The design of the facades was done in the modern Andalusian style, taking into account the treatment of the similarity of the facades by distinguishing some architectural forms.



# Residential Compound , Jeddah



## Residential compound , Jeddah

**The Project** is Located in Jeddah KSA at approx. land area **19,598 Sq.m**

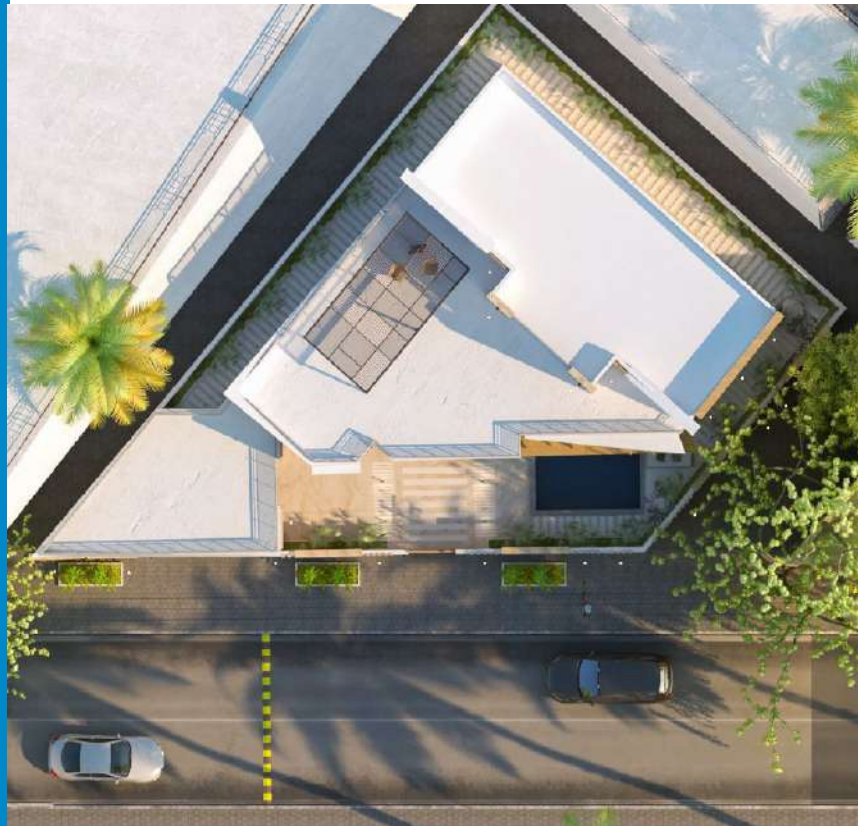
**Client** Fayez Gmail Zak zouk

### Scope of Services

Architecture Design  
Engineering Technical office

### Amenities

Residential compound  
65 Villas  
Spa  
Internal swimming pool  
Restaurants Multipurpose,  
Playground ( Basketball,  
Volleyball, Handball)



## Private Villa

The spirit of the design challenge is the nature of the land that characterizes this project until a unique and different model is made from the traditional forms of villas..

**The Project** is at approx. land area **314.40 Sq.m**

**Client** Private

**Scope of Services**  
Design Review



**Nasser Gardens**  
Al Esaie Group , Jeddah

**The Project** is Located in Jeddah, KSA at approx. land area **452,000 Sq.m**

**Client** Al Esaie Group

**Scope of Services**

Master Planning  
Architectural Design  
Engineering

**Amenities:**

**Consists of 2 Phases**

- Development compound  
26 Townhouses,  
156 Villas
- Touristic compound  
48 Townhouses,  
72 Villas







## ■ Al Thoumaly Villas

Jeddah, KSA

**The Project** is Located in Jeddah, KSA at approx. land area **1,195 Sq.m**

**Client** Dr. Saad Al Thoumaly

### Scope of Services

Master Planning  
Architectural Design  
Landscape  
Engineering

### Amenities:

Reception 2 villas  
Pool & playground area



Hetten Villa





## ■ Hetten Villa

Al Riyadh, KSA

**The Project** is Located in Al Riyadh, KSA at approx. land area **1,750 Sq.m**

**Client** Mr. Samy Al Ghothbar

### **Scope of Services**

Master Planning  
Architectural Design  
Landscape  
Engineering

### **Amenities:**

Residential Villa Gym  
Guest House



Housing accommodation Makkah , KSA





## Housing accommodation

Umm Al Qura University  
.BLLBI , KSA

**The Project** is Located in BLLBI,  
KSA

**Client** Umm Al Qura University

### Scope of Services

Arch and Engineering Design  
including Master Planning,  
Infrastructure, Architectural,  
Interior - Landscape Design,  
Structural, Electrical,  
Mechanical

### Amenities:

- zone 1 (560000 m2)
- zone 2 (129583 m2)
- zone 3 (730000 m2)
- zone 4 (92000 m2)
- zone 5 (207858 m2)
- Residential buildings
- Administration
- Commercial building
- Restaurants
- Shopping mall Service  
building
- Two commercial
- Parking area / Open area



## ■ Al Massila Compound

Doha , Qatar

An Emphasis was given to the quality of the spaces and their functional hierarchy in the passages from the formal zone to the semi-private and family courts to the most private layers of the dwelling, elaborating the journey from the internal double-height spaces to the more enclosed and private rooms.

Ponds, internal and external courtyards, gardens, fountains, gazebos, and waterfall pools are all sustainable key tools to regulate the temperature of the villa by enhancing the natural airflow and also offering a genuine atmosphere for both direct and indirect natural light.

**The Project** is Located in Al Messila, Doha, Qatar. on approx. the land area of **35,882 sq. m**

### **Client**

The Private Engineering Office

### **Scope of Services**

Master Planning  
Architectural Design  
Engineering  
Landscape Design





## ■ Amal Villa

### The Project

#### Client

#### Scope of Services

Master Planning

Architectural Design

Engineering

Landscape Design

**The Project**

**Client**

**Scope of Services**

- Master Planning
- Architectural Design
- Engineering
- Landscape Design



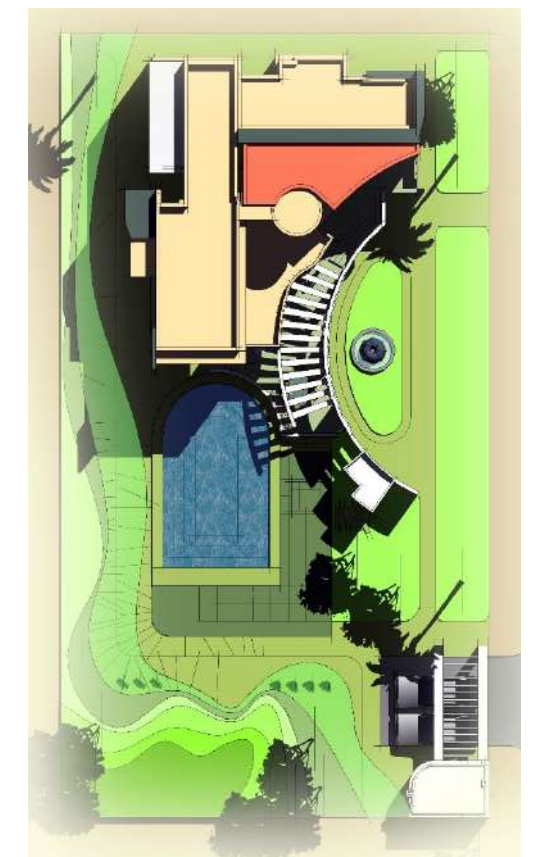


**The Project**

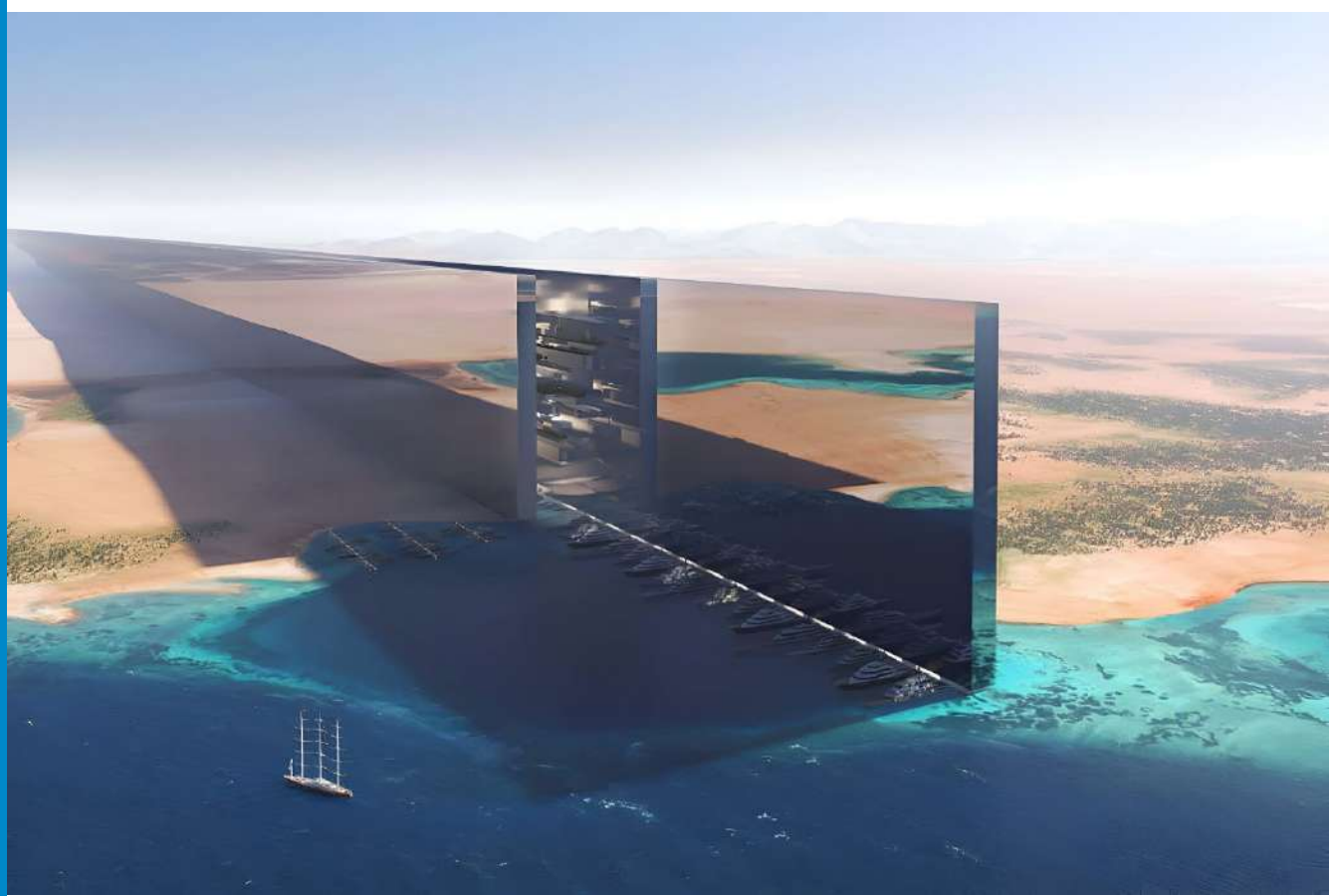
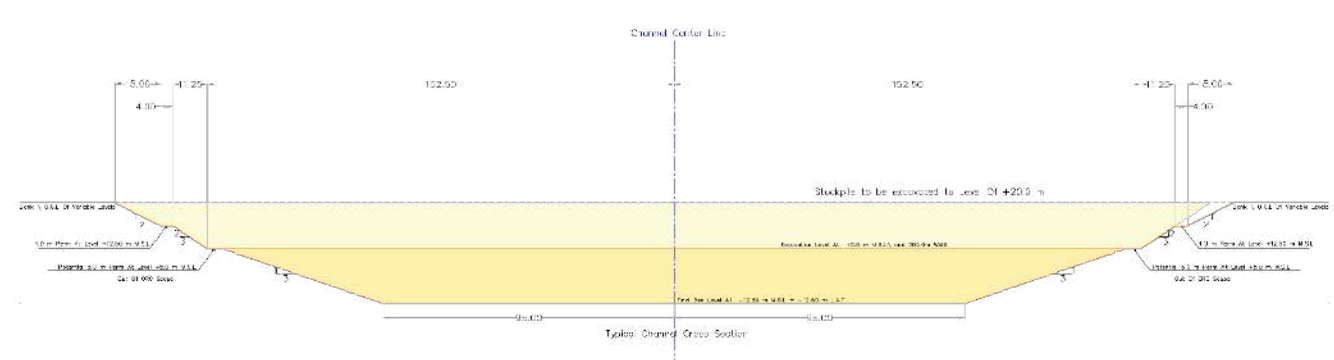
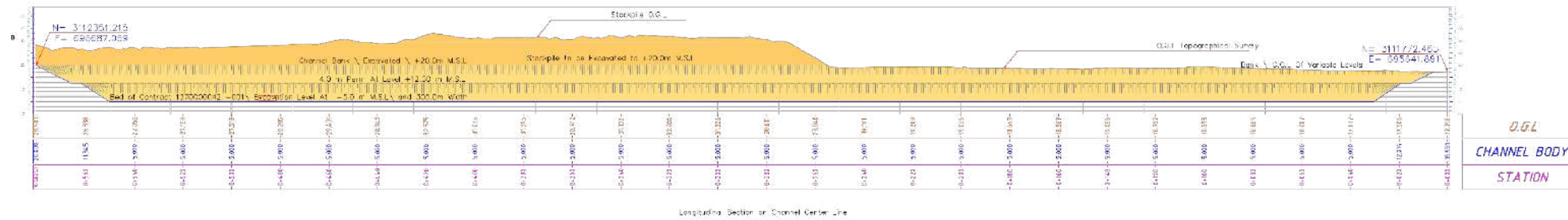
**Client**

**Scope of Services**

- Master Planning
- Architectural Design
- Engineering
- Landscape Design



# LOGISTICS



The Line Hidden Marina - Neom

The Project is located in Neom, KSA

Client Neom

Scope of Services  
Geotechnical & Structure Design Verification.



## SECURITY COMPLEX AT JEDDAH ISLAMIC PORT

**The Project is located** in Islamic Port, Jeddah, KSA In approx. land area **32,000 M2**

**Client** JEDDAH ISLAMIC PORT.

### Scope of Services

SERVICES: DESIGN & ENGINEERING FOR; REMASTER PLAN FOR THE PORT, ARCHITECTURAL, MECHANICAL, ELECTRICAL, STRUCTURAL, TIS STUDIES INFRASTRUCTURE, PORT ROADS REDESIGN

New Distribution Centre for IKEA/KSA in KAEC



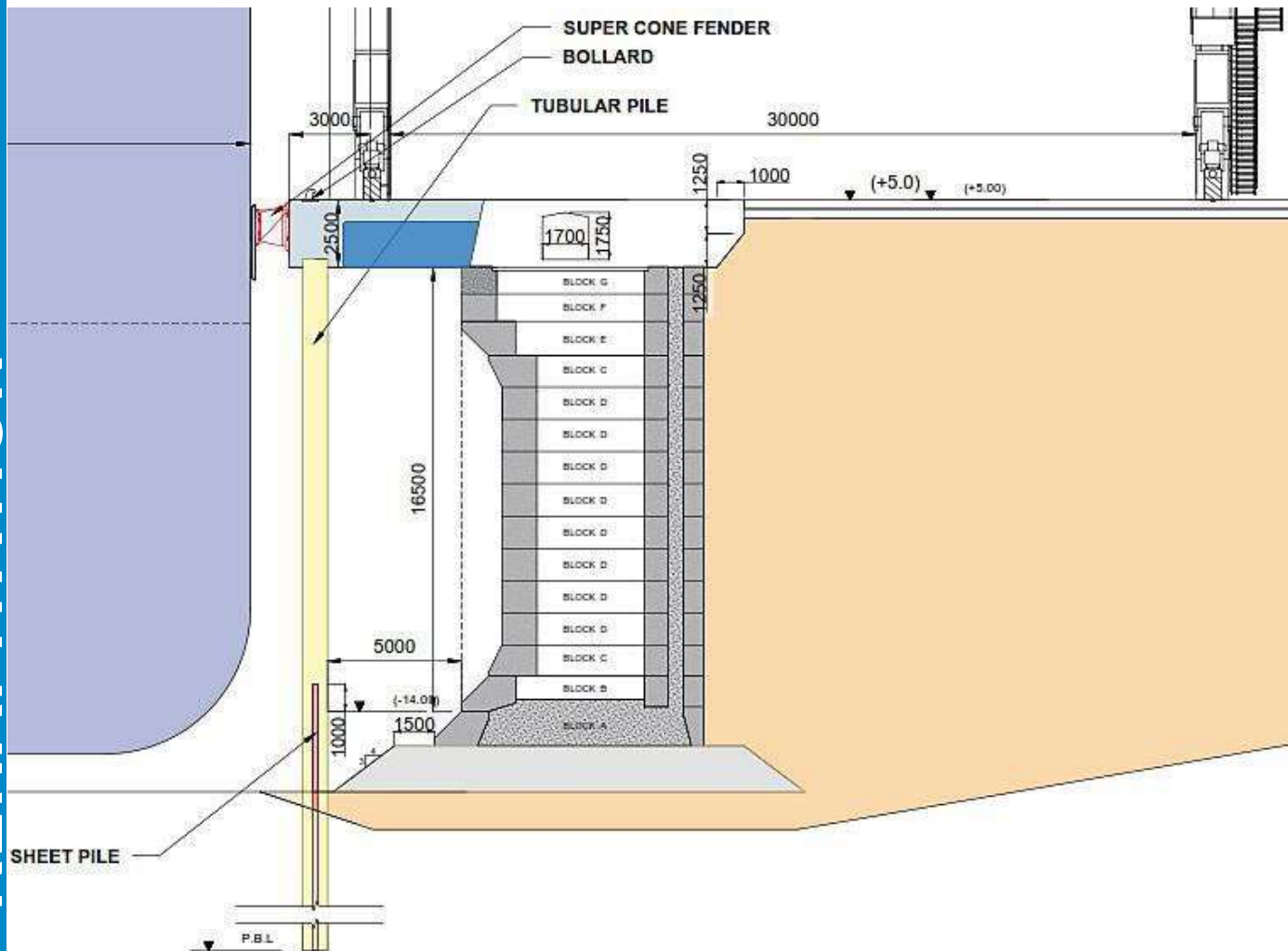


## ■ New Distribution Centre for IKEA/KSA in KAEC

- FLOW, a progressive logistics company that is part of Ghassan Ahmed Al Sulaiman group announced several key initiatives to drive its growth going forward, including the start of its new Omni-channel and e-commerce fulfillment center in King Abdullah Economic City, a bespoke facility for IKEA Saudi Arabia.



# JUBAIL COMMERCIAL PORT DREDGING & BAIRTH REHAPITATION



## JUBAIL COMMERCIAL PORT DREDGING & BAIRTH REHAPITATION

The Project is located in  
JUBAIL – KAEC

Client MAWANI AUTHORITY  
YANBU COMMERCIAL PORT

### Scope of Services

- OFFSHORE BOREHOLES
- BATHYMETRIC SURVAY
- ENVIRONMENTAL STUDY
- DESIGN FOR: EXISTING BAIRTHS SUPPORT EXISTING BAIRTHS EXTENSION
- DREDGING DESIGN





## YANBU COMMERCIAL PORT DREDGING WORKS

The Project is located in  
JEDDAH – KAEC

Client MAWANI AUTHORITY  
YANBU COMMERCIAL PORT

### Scope of Services

2019-2020  
OFFSHORE BOREHOLES  
BATHYMETRIC  
SURVAY  
ENVIRONMENTAL  
STUDY DREDGING  
DESIGN







## ■ Control Tower – Yanbu Port

### Scope of Services

DESIGN WORKS FOR Pier

- #20 in King Fahad industrial port - Yanbu
2. Design works for the control Tower for Yanbu Port
3. Design works for Coast Guards Building and Industrial Safety Building in Yanbu Port
4. Design for fire fighting and Alarm network for Yanbu Port
5. Re-habitation design and increasing the draft length for Piers 1, 2, 3, 11 & 12 in Jizan Port
6. Design works for security complex in Islamic Jeddah Port



## ■ DEFAF LOGISTIC PROJECT WAREHOUSES & CONTAINER YARD

**The Project** is Located Jeddah-  
KAEC at approx. land area  
**147,104 Sq.m**

**Client** DEFAF UNITED  
COMPANY

### **Scope of Services**

Design Review for Master Plan,  
infrastructure, Architectural,  
Structural Electrical,  
Mechanical, safety design -  
AOR & Construction Inspection

### **Amenities:**

Warehouse & container





## ■ ALSHAYA NEW WEST COAST LOGISTIC HUB

**The Project** is Located Jeddah-  
KAEC at approx. land area

**20,418 Sq.m**

**Client** ALSHAYA  
INTERNATIONAL TRADING CO  
PANY.

### **Scope of Services**

DESIGN REVIEW FOR:

- \* MASTER PLAN
- \* ARCHITECTURAL
- \* MECHANICAL
- \* ELECTRICAL
- \* STRUCTURAL
- \* TIS & EIA STUDIES
- \* relationships and  
environmental impact  
assessment

### **Amenities:**

Main store for ALSHAYA Co



## ALNAGHI INDUSTRIAL COPLEX CONTAINER YARD



### Amenities:

- Administrative building
- Raw warehouse
- Finished warehouse
- Truck workshop
- Security guards
- Dispatch office
- Utility building
- Car Container Parking
- Car Parking

**The Project** is Located Jeddah-KAEC at approx. land area **300,596 Sq.m**

**Client** UNITED YOUSEF NAGHI COMPANY.

### Scope of Services

Architectural and Engineering Design including Master Planning, Infrastructure, Architectural, Interior Design - Landscape Design, Structural, Electrical, Mechanical - Life Safety, and Construction Supervision





**BINZAGR**  
**NATIONAL DISTRIBUTION CENTER**

Fully automatized warehouses for food & non-food with total built area 110,000 m2

**Amenities:**

2 Main Buildings,  
Several Utility Buildings,  
Boundary walls,  
Access roads

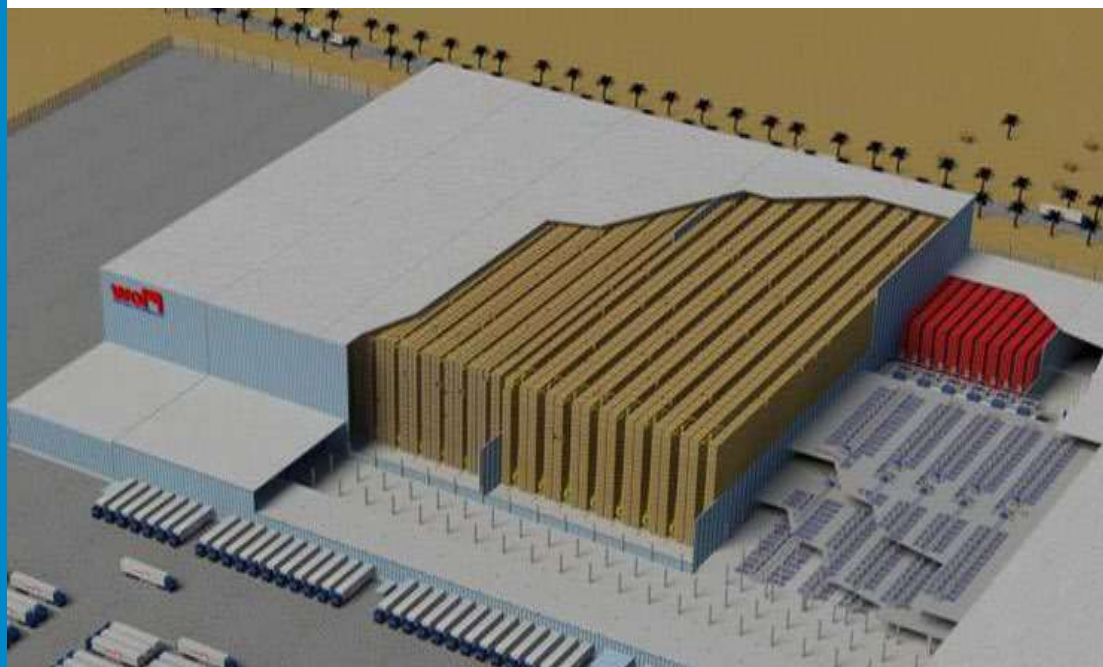
**The Project** is Located Jeddah-  
KAEC at approx. land area  
**307,138 Sq.m**

**Client** BINZAGR COMPANY.

**Scope of Services**

Architectural and Engineering Design including Master Planning, Infrastructure, Architectural, Interior Design - Landscape Design, Structural, Electrical, Mechanical - Life Safety, and Construction Supervision





## ■ GHAZI ABBAR LOGISTICS HUB

**The Project** is Located in Jeddah- KAEC at approx. land area **201.383 Sq.m**

**Client** Ghassan Al Sulaiman Furniture Trading Co

### Scope of Services

DESIGN REVIEW FOR:

- MASTER PLAN
- ARCHITECTURAL
- MECHANICAL
- ELECTRICAL
- STRUCTURAL
- GIS & EIA STUDIES
- relationships and environmental impact assessment

### Amenities:

- Receiving Area
- High bay Warehouse for Pallets (Rack supported Building)
- Mini load Warehouse for totes (in-house rack solution).





■ WPL Warehouses in KAEC's IV  
WPL company  
King Abdullah Economic City- KAEC

**The Project** is Located in King  
Abdullah Economic City- - KAEC  
at approx. land area **108,609**  
**Sq.m**

**Client** Al Tajamouat Investment  
Company

**Scope of Services**

Architectural design  
Engineering  
Construction Supervision

**Amenities:**

Workers accommodation  
Managerial accommodation  
Restaurant & catering area  
Retail & offices  
Admin & HR Customer  
Building Freight  
Forwarders  
Vocational school





■ SHAMLA Pharmaceutical Factory in KAEC

**The Project** is Located in KAEC at approx. land area **23,593 Sq.m**

**Client** Shamla for Pharmaceutical Manufacturing.

**Scope of Services**

- DESIGN REVIEW FOR:
- ARCHITECTURAL
- MECHANICAL
- ELECTRICAL
- STRUCTURAL
- TIS & EIA STUDIES
- Construction Inspection







## ■ PWC LOGISTIC WAREHOUSES, KING FAHAD , AIRPORT - DAMMAM

**The Project** is Located in Dammam KSA at approx. land area **500,000 Sq.m**

**Client** PUBLIC WAREHOUSES CO

### **Scope of Services**

DESIGN & ENGINEERING FOR:  
MASTER PLAN,  
ARCHITECTURAL,  
MECHANICAL, ELECTRICAL,  
STRUCTURAL &  
INFRASTRUCTURE.

### **Amenities:**

Warehouses Complex  
Location: Dammam Airport  
Logistics zone

# Distinguished Experts for A/E Consultancy

Profile 2023

Project Management Office Experts Since 2010

Project Management  
Project & Construction  
Management (PM) (CM)  
Facilities Management  
Project Management  
Oversight



شركة الخبراء المميزين للاستشارات الهندسية

Distinguished Experts for A/E Consultancy Co.

Riyadh - Jeddah - Khobar - Abha

## PROGRAM MANAGEMENT



Our Comprehensive program management services helps Clients keep multiple interrelated projects in sync, on time and within budget. We help owners, financial institutions, sureties and others reduce the uncertainty and risk in their capital programs.

Our Program managers review every detail of all projects, set-up objectives, plans and priorities, manage and control the process, and identify and resolve problems.

Our experienced professionals and technical resources work with the client to define, plan, implement and integrate every aspect of each project.

When managing an entire multi-disciplinary program our service improves timing, cost and quality. Our client benefits from a single point of management responsibility for planning, design management, permitting compliance, construction management and ongoing operations services.

# PROJECT AND CONSTRUCTION MANAGEMENT (PM/CM)

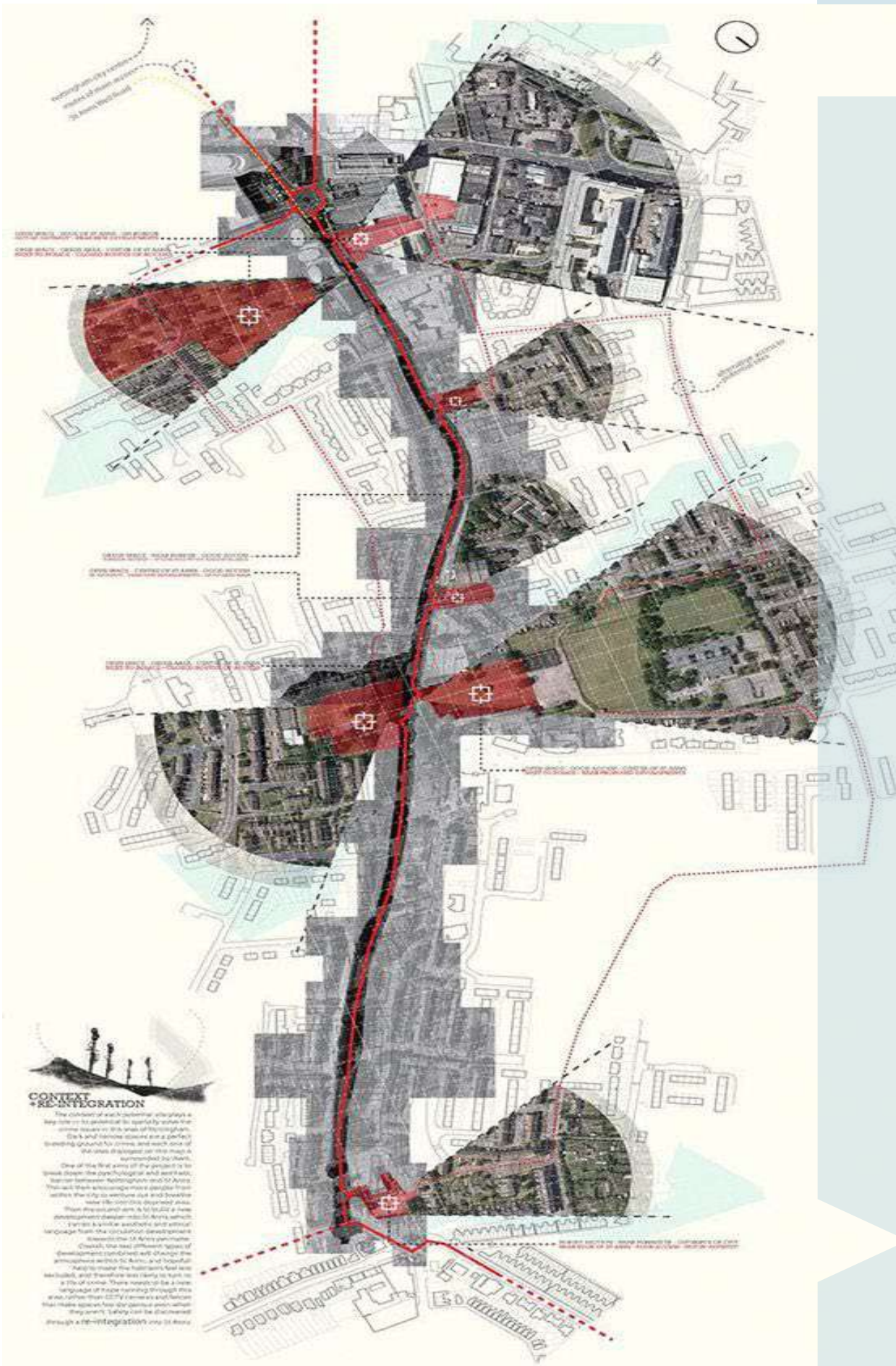
The construction manager oversees on-site operations, such as personnel, materials, and the construction budget, and their role is limited to the construction projects only, while Project managers oversee all phases of the project, from marketing to administrative needs, the project manager, on the other hand, is more responsible for the project budget and the timeline.

We provide Project and Construction Management (PM/CM) as a professional service that uses techno-scientific project management techniques to manage the planning, design, and construction from its beginning to its end to construction industry worldwide.

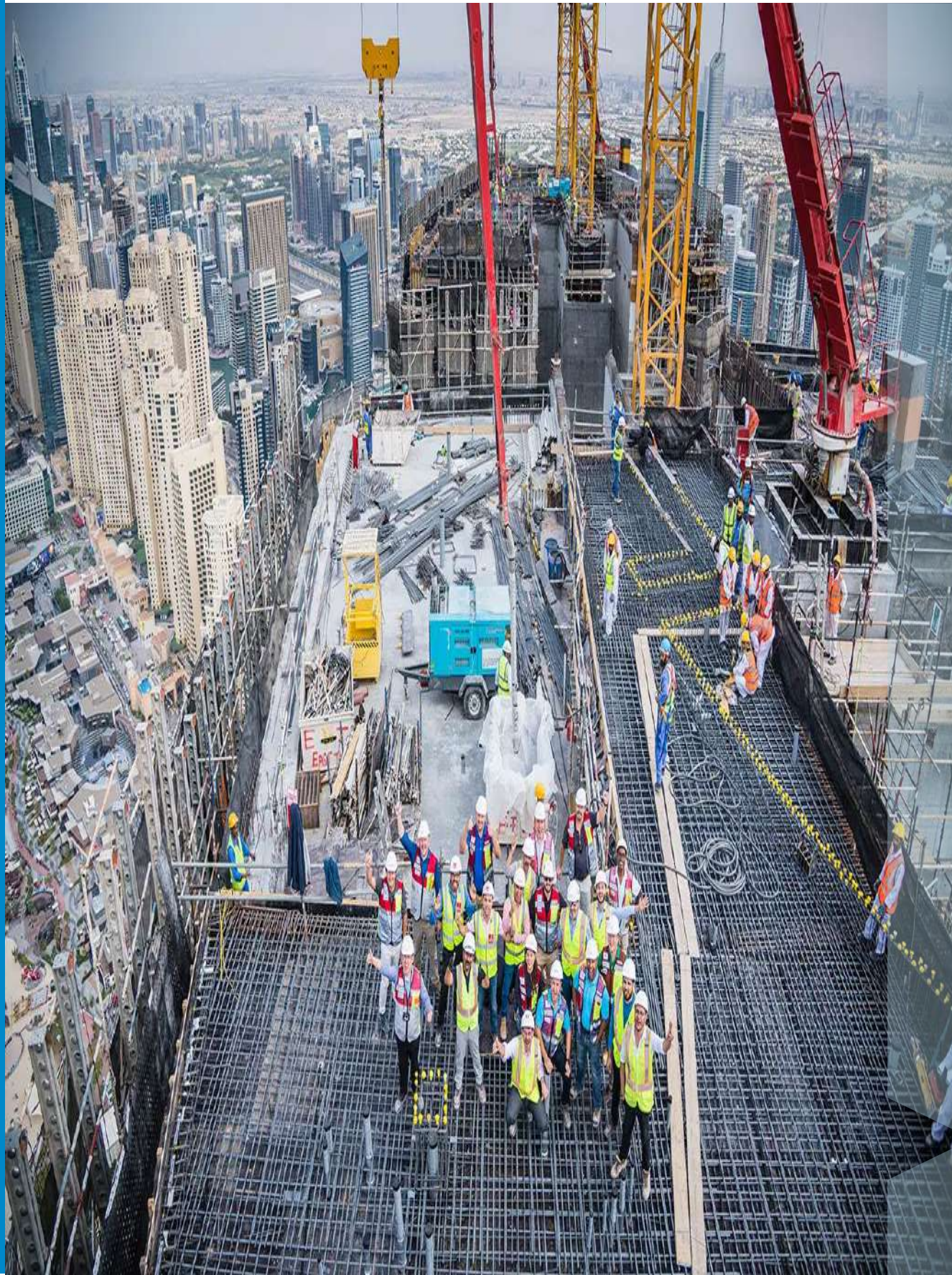
We manage all phases of the construction process from pre-design through completion, including cost and budget controls, scheduling, estimating, expediting, inspection, contract administration and management of contractors, subcontractors and suppliers.

Our construction manager (s) will supervise and manage contractors and laborers at construction site.

From time to time, they meet and discuss projects with architects, specialized trade employees, and civil engineers on projects or upcoming builds. They are responsible for addressing emergencies, work delays, or any other problems that affect the construction project.



# PROJECT AND CONSTRUCTION MANAGEMENT (PM/CM)



The Scope of PM/CM includes but not limited to

Control project time, cost, and quality. CM is compatible with all project delivery systems.

Serve the clients' best interest first and also is an owner's representative.

Reduce overall project costs, contract management, reducing change orders, orders reduction in time, and elimination of unnecessary scope and cost.

Advise the team for best results

Enhance quality control to reduce the potential for defects and poor workmanship.

Provide realistic and reliable budgets and protecting the Owner from unnecessary liability.

Optimize and accelerate the design and construction schedule.

Provide cost-effective document controls,

Protect the Owner from unnecessary liability.

Provide management expertise, applying resources wherever needed.

## FACILITIES MANAGEMENT



### The scope of FM Services provided by us shall include but not limited to

- 1) Sourcing and overseeing contracts and service providers for functions such as catering, cleaning, parking, security, and technology
- 2) Advising businesses on measures to improve the efficiency and cost-effectiveness of the facility
- 3) Supervising teams of staff across different divisions
- 4) Ensuring that basic facilities are well-maintained and conducting proactive maintenance
- 5) Dealing with emergencies as they arise
- 6) Managing budgets
- 7) Ensuring that facilities meet compliance standards and government regulations
- 8) Planning for the future by forecasting the facility's upcoming needs and requirements
- 9) Overseeing any renovations, refurbishments, and building projects
- 10) Helping with office relocations
- 11) Drafting maintenance reports

## PROJECT MANAGEMENT OVERSIGHT



### The scope of FM Services provided by us shall include but not limited to

Our Project Management Oversight (PMO) services support project success by

- 1) Independently forecasting problems,
- 2) Identifying setbacks and recommending solutions in every area of construction.

This is the essence of PMO; to give clients objective information allowing them to make prudent decisions about key issues before major problems occur.

Our PMO teams provide timely and objective reporting, from evaluating the performance of the construction manager, designer and contractors, to monitoring schedules and analyzing costs. Teams include specialists in all phases of construction, so that the myriad events that occur on a project can be assessed and evaluated in a timely way by the right expert. Because our staff includes experts who are leaders in their disciplines, our clients benefit from strong recommendations, which are both technically and financially sound.

**Thank You ..**

DEC Team

